

new Work.



Pure texture.

Inspired by visual fields of light and shadow, rendered as pure texture in a high fashion aesthetic.

MANNINGTON
COMMERCIAL

EQUINOX COLLECTION

PERFORMANCE ATTRIBUTES

- Ultron® Type 6,6 nylon
- Available in 24" x 24" modular and 12' broadloom (style dependent)
- Limited 15-Year ColorSafe® Bleach Resistant Warranty
- Limited 15-Year XGUARD® Stain Resistant Warranty
- Limited Lifetime UltraBac® RE Wear and Backing Warranty
- Limited Lifetime Infinity® RE Modular Wear and Backing Warranty

ENVIRONMENTAL ATTRIBUTES

- Certified NSF/ANSI-140 Platinum
- Infinity® RE contains 30% total recycled content with a minimum of 10% post-consumer recycled content by total product weight
- UltraBac® RE contains a minimum of 10% post-consumer recycled content by total product weight
- CRI Green Label Plus
- Adhesive meets VOC content limit of SCAQMD Rule 1168
- ISO 14001 registered manufacturing facility
- Contributes to LEED credits
- Carpet can be reclaimed through Mannington's LOOP® carpet reclamation program

ULTRABAC® RE (style dependent)

- Light Grid standard on UltraBac® RE
- Ecliptic Point and Shadow Play are available on UltraBac® RE for a 500 sq. yd. minimum
- Certified NSF/ANSI-140 Platinum
- Contains a minimum of 10% post-consumer recycled content by total product weight
- High tuft bind
- Resists edge ravel and delamination
- 12' broadloom
- Limited Lifetime Wear and Backing Warranty

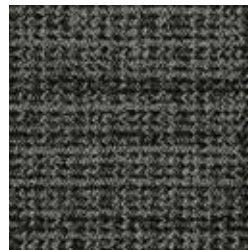
INFINITY® RE

- Certified NSF/ANSI-140 Platinum
- Contains 30% total recycled content with a minimum of 10% post-consumer recycled content by total product weight
- Impermeable moisture barrier
- Eliminates wick-back staining
- Superior tuft bind wet/dry
- Superior dimensional stability
- Passes British Spill and Moisture Impact Tests
- 24" x 24" modular carpet tile
- Limited Lifetime Wear and Backing Warranty

LIGHT GRID FEATURED all colors available in all three patterns



axis (42707)



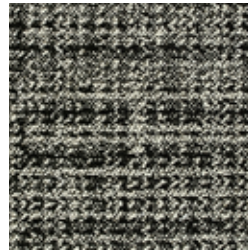
celestial (34606)



descension (43808)



dusk (84413)



eclipse (14303)



latitude (13202)



longitude (83312)



precession (23505)



reflection (82211)



refraction (54110)



solstice (12101)



twilight (44909)



zenith (15404)

Choices that Work.

800 241 2262 manningtoncommercial.com

Printed on recycled paper. Please help us close the loop by recycling this brochure or by sharing it with another individual.

MANNINGTON
COMMERCIAL