

*new* Work.



There's a logic to creativity.

Drawing inspiration from spectrograph readings of elements from the periodic table, the linear construction of Elemental Spectrum II unites timeless, neutral backgrounds with accents of vibrant color or tonal sophistication.

**MANNINGTON**  
COMMERCIAL

## ELEMENTAL SPECTRUM II

### PERFORMANCE ATTRIBUTES

- 100% Antron Lumena® Type 6,6 Solution Dyed Nylon
- 24" x 24" modular carpet tile
- Limited 15-Year XGUARD® Stain Resistant Warranty
- Limited 15-Year ColorSafe® Bleach Resistant Warranty
- Limited Lifetime Wear and Backing Warranty

### ENVIRONMENTAL ATTRIBUTES

- Infinity® Modular contains pre-consumer recycled content
- Certified NSF/ANSI -140 Gold
- Meets CRI Green Label Plus
- Adhesive meets VOC content limit of SCAQMD Rule #1168
- ISO 14001 registered manufacturing facility
- Contributes to LEED credits
- Carpet can be reclaimed through Mannington's LOOP® carpet reclamation program

### INFINITY® MODULAR

- Certified NSF/ANSI-140 Gold
- Contains pre-consumer recycled content
- Superior tuft bind wet/dry
- Superior dimensional stability
- Passes British Spill and Moisture Impact Tests
- 24" x 24" modular carpet tile
- Limited Lifetime Wear and Backing Warranty

### ELEMENTAL BRIGHTS II



sodium (82056)



neon (42010)



lithium (14099)



chromium (12021)



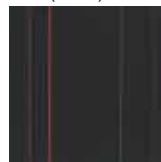
iron (84037)



radium (34011)



hydrogen (85088)



carbon (15012)

### ELEMENTAL NEUTRALS II



radon (42130)



argon (34131)



nitrogen (82136)



platinum (12101)



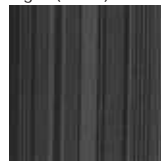
lead (84117)



aluminum (14129)

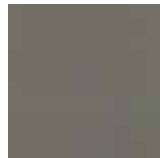


krypton (85168)



xenon (15092)

### ELEMENTAL SOLIDS II



grey (12022)



black (15018)



blue grey (34111)



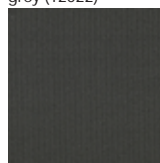
blue (35174)



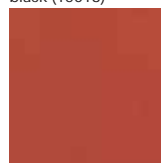
aqua (44185)



green (43212)



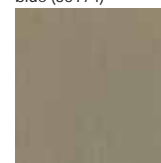
cool grey (14019)



orange (64213)



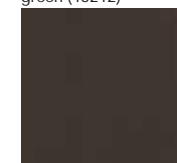
yellow orange (63210)



tan (82054)



warm grey (84033)



chocolate (85082)

Choices that Work.

800 241 2262 [manningtoncommercial.com](http://manningtoncommercial.com)

**MANNINGTON**  
COMMERCIAL