

Moiré Collection

Mannington®
COMMERCIAL



Cover: Visible Light Broadloom - Full Spectrum 52788
Above: Pure Wavelength Modular - Frequency 13783
Installation: Horizontal Brick Ashlar



Ray Tracing Modular - Full Spectrum 52788, Prism 32786 (inset)
Installation - Vertical Ashlar (Prism turned 90 degrees)



Visible Light Broadloom - Prism 32786; **Spacia Stone** - Plaza Concrete SS5S3070



Ray Tracing Modular - Shine 15784; **Visible Light Modular** - Aura 24787 (inset)
Installation - Herringbone



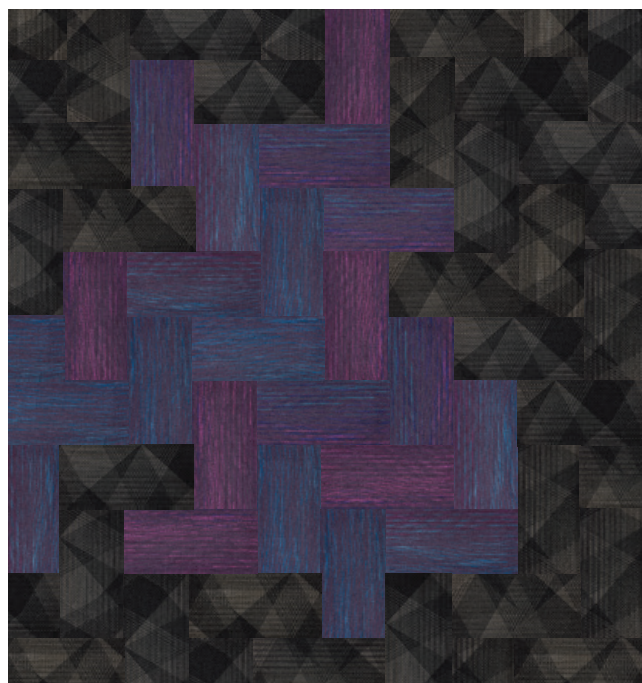
Visible Light Modular - Lumens 12782, Flux 72785 (inset)
Installation - Vertical Ashlar (Flux turned 90 degrees)



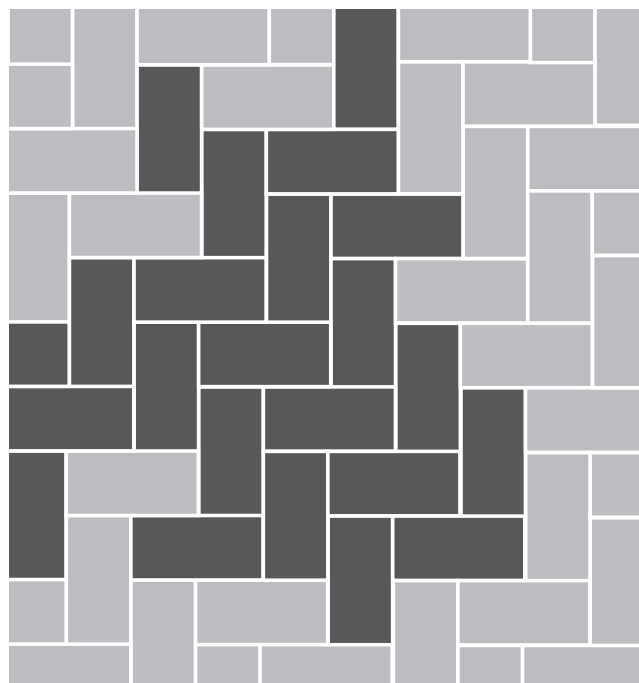
Visible Light Broadloom - Aura 24787; City Park Windsor Oak - Ashen CPC101

Sample Installations

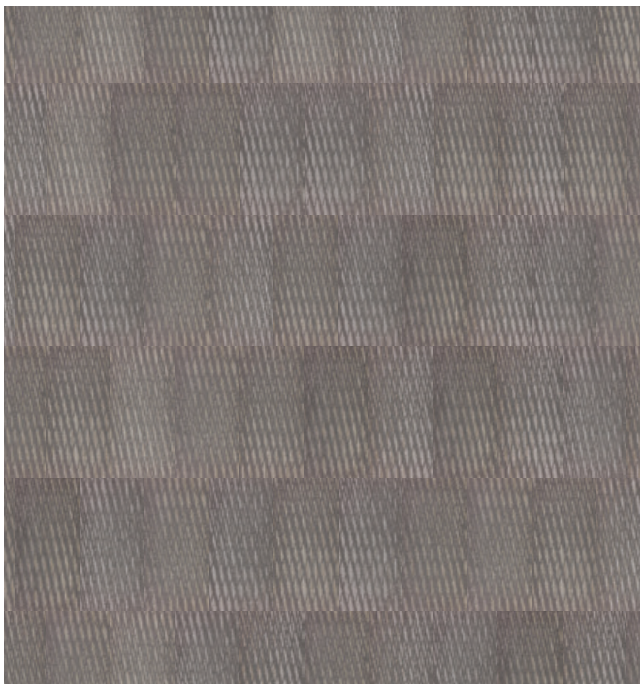
Each modular plank in the Moiré Collection shows a small section of a larger color gradient. A package of planks includes a random mix of sections from the gradient of your choice. The planks should be installed with their visuals randomly mixed in order to achieve the design intent. We present just a few ideas here to show the array of layout possibilities with Moiré.



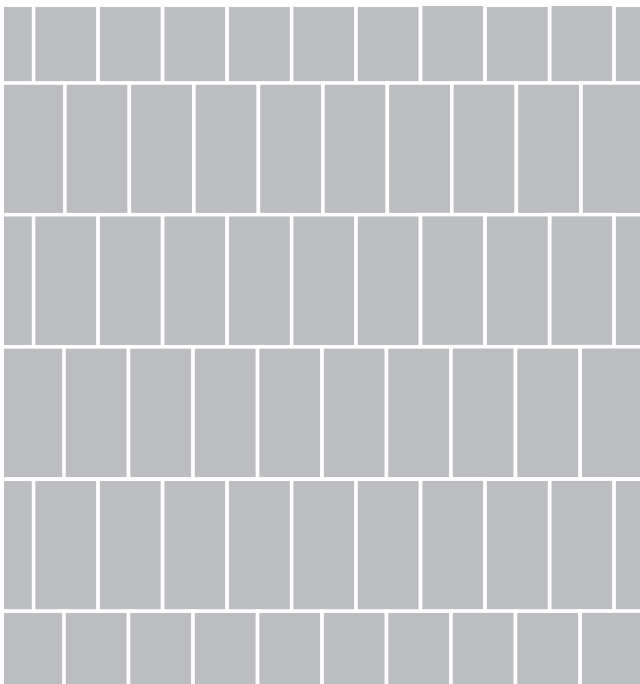
Ray Tracing Modular Shine 15784; **Visible Light Modular**
Aura 24787 (inset)



Herringbone Installation



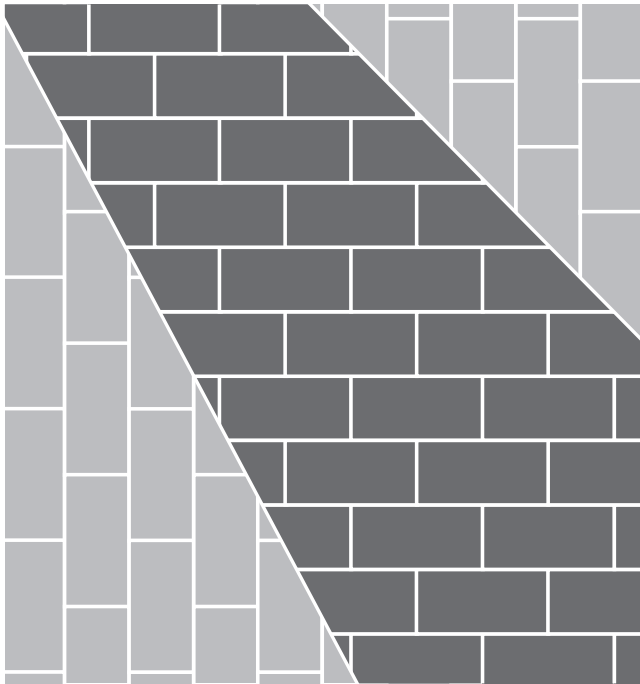
Pure Wavelength Modular Frequency 13783



Horizontal Brick Ashlar Installation



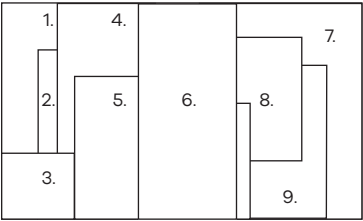
Visible Light Modular Lumens 12782 & Flux 72785 (inset)



Vertical Ashlar Installation with 90 degree turn

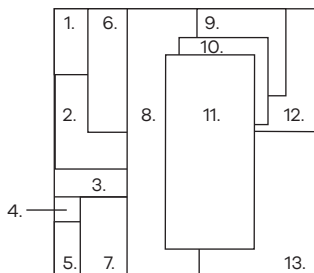
Moiré Coordinates

Our flooring integrates seamlessly across product types and collections, so you can build an inspired flooring palette for your spaces without sacrificing form for function. Choose LVT or resilient sheet in stone visuals for a cool complement to the textural variety of Moiré. Bring in gradients and striations from other carpet collections for subtle pattern play. Reinforce or extend your color palette with the perfectly matching solid tones of the Color Anchor Collection, which spans all product types.



10.

- | | |
|---------------------------------------|---|
| 1. Moiré, Ray Tracing, Flux | 7. Intrinsic, Merge, Security |
| 2. Spacia Stone, Dry Stone, Alba | 8. Color Anchor, Groove, Squash Blossom |
| 3. Moiré, Ray Tracing, Flux | 9. Color Anchor, Groove, Poppy Red |
| 4. Color Anchor, Flowerista | 10. Color Anchor, Abuzz |
| 5. Moiré, Visible Light, Flux | |
| 6. Traction Avenue, Soft Tread, Turbo | |



1. Moiré, Visible Light, Lumens
2. Intrinsic, Merge, Justice
3. Moiré, Pure Wavelength, Lumens
4. Moiré, Visible Light, Lumens
5. Color Anchor, Stride, Canopy Green
6. Color Anchor, Squawk
7. Color Anchor, Stride, Squawk Box
8. Traction Avenue, Soft Tread, Chroma
9. Color Anchor, Stride, Sterling Gray
10. Spacia Stone, Plaza Concrete
11. Moiré, Pure Wavelength, Lumens
12. Moiré, Visible Light, Lumens
13. Intrinsic, Merge, Authenticity



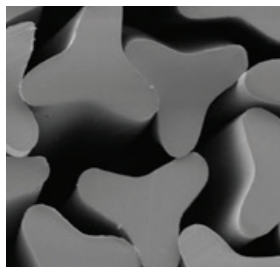
Better Design, Easier To Maintain Carpet

Dirt and foot traffic are inevitable. Antron® type 6,6 nylon carpet fiber, designed with a four-hole hollow filament, delivers unbeatable overall performance, stain resistance, and texture retention. Antron® fiber also features DuraTech® soil resistance treatment to make cleaning easier and to protect your carpet for over one million foot traffics.

Fiber Matters



Antron® type 6,6 nylon allows soil to be released more readily during vacuuming.



A type 6 nylon trilobal shape tends to hold soil in the fiber where vacuuming cannot release it.



Fiber Shape

Antron®'s innovative hollow filament fiber shape enhances soil hiding capabilities. The smaller surface area minimizes soil accumulation and can make cleaning easier. Carpets with Antron® nylon can have 65% better soil resistance. ⁽¹⁾



Appearance Retention

Carpets with Antron® nylon can have 2x better texture retention than carpets of the leading competitive nylon. Carpets of Antron® Lumena™ nylon can have up to 10x better stain resistance. ⁽²⁾



Quality Assurance

All carpets with Antron® nylon are subjected to a rigorous certification screening process and warranted by INVISTA for static resistance and against fiber loss due to abrasive wear.

6,6

Type 6,6 Nylon Polymer

Type 6,6 nylon has a tighter, denser molecular structure than type 6 nylon. Carpet of Antron® nylon last up to 75% longer, and a longer product life can play a significant role in reducing environmental impact. ⁽³⁾

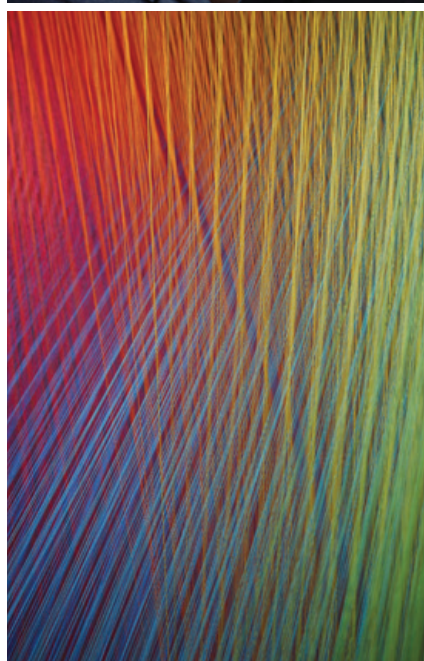
1. Carpets of Antron® nylon can have 2x better texture retention than carpets of the leading competitive nylon.

2. Carpets of Antron® Lumena™ nylon can have up to 10x better stain resistance than carpets of the leading competitive solution dyed nylon.

3. Carpets of Antron® nylon last up to 75% longer than the majority of competitive nylon carpets. All test results and claims made are based upon a representative sample of carpets manufactured or sold in North America. Results for carpets manufactured and sold in your region may vary.

Moiré Inspiration

The Moiré Collection was designed in collaboration with artist Gabriel Dawe and inspired by his large-scale art installations. Dawe uses miles of thread in delicate color gradations to create unique shapes of depth and volume, which are seemingly made of rays of light. He has described the moiré effect as inherent to the experience of his installations. The Moiré Collection translates both the delicate color work and dynamic patterning of Dawe's art into a versatile flooring solution.



Moiré Collection

Style	Pure Wavelength Modular (Non-Ortho Phthalate)	Ray Tracing Modular (Non-Ortho Phthalate)
Construction	Tip-Sheared Patterned Loop	Tip-Sheared Patterned Loop
Face Fiber	Antron® Legacy™ Type 6,6 Nylon	Antron® Legacy™ Type 6,6 Nylon
Dye Method	Solution / Yarn	Solution / Yarn
Gauge	5/64 (50.39 per 10 cm)	5/64 (50.39 per 10 cm)
Stitches Per Inch	11.83 (46.57 per 10 cm)	11.33 (44.61 per 10 cm)
Density	6,711 (249.37 kg/m³)	6,677 (236.96 kg/m³)
Pile Thickness	0.118" (3.0 mm)	0.124" (3.15 mm)
Weight	22 oz./sq. yd. (746 g/m²) Finished	24 oz./sq. yd. (814 g/m²) Finished
Backing Type	Infinity® Modular	Infinity® Modular
Sizes	18" x 36" (45.72 x 91.44 cm)	18" x 36" (45.72 x 91.44 cm)
Colors	8	8
Packaging	6.00 sq. yds. / 12 Tiles	6.00 sq. yds. / 12 Tiles
Pattern Repeat	N/A	N/A
Adhesive	Infinity® Adhesive	Infinity® Adhesive
Installation Method	Vertical Ashlar, Horizontal Brick Ashlar, Herringbone	Vertical Ashlar, Horizontal Brick Ashlar, Herringbone
Testing		
Dimensional Stability AACHEN Test	Passes	Passes
Electrostatic Propensity (AATCC 134)	Less than 3.0 KV	Less than 3.0 KV
Radiant Panel (ASTM E648)	≥ 0.45 watts/cm², Passes (Class 1)	≥ 0.45 watts/cm², Passes (Class 1)
Smoke Density (ASTM E662)	≤ 450-Passes	≤ 450-Passes
Methenamine Pill Test (ASTM D2859)	Passes	Passes
Hexapod (ASTM D5252) TARR Rating	3.5	3.5
Environmental Data		
NSF / ANSI-140 Certification	Infinity® Modular - Gold	Infinity® Modular - Gold
Recycled Content	Contains Pre Consumer Recycled Content	
Indoor Air Quality	CRI Green Label Plus Certified	
Recyclability	LOOP®	
LEED Scoreboard	May contribute to LEED Credits LEED 2009: MRc5 Regional Material; MRc6 Rapidly Renewable Materials; IEQ4.1 Low Emitting Adhesives; IEQ4.3 Low Emitting Materials - Flooring LEED v4: Building Product Disclosure & Optimization - EPDs; Building Product Disclosure & Optimization - Sourcing Raw Materials; IEQc2 - Low Emitting Materials	
mindful Materials	Visit mM Origin website, mindfulmaterials.origin.build , for current transparency information	
Manufacturing	Calhoun, Georgia (USA) - ISO 14001 Registered	
Warranty		
	Limited Lifetime Wear & Backing Limited 15-Year XGUARD® Stain Resistant Limited 15-Year ColorSafe® Bleach Resistant	

- Specifications are based on averages from normal manufacturing tolerances. Such variations do not affect product performance.
- Protective chair pads are recommended under office chairs with roller castors to preserve appearance and avoid premature wear.
- As with all quality carpets, slight variation in color may occur from dye lot to dye lot.
- Backing or other materials may be changed without prior notice when shortages occur or when technological advancements provide improved product performance.
- This product is intended solely for use as an indoor floor covering and is not recommended or sold for any other purpose.
- The inherent characteristics of geometric linear patterns can result in double-dark or double-light lines at the seam and to some extent pattern run-off or bias. This is not a manufacturing defect, and as such, should be considered when selecting a modular carpet installation method.
- Cut piles, cut and loops, and tip-sheared constructions are not recommended for heavy commercial traffic, corridors or through channeled traffic. Please contact your Mannington representative for information regarding these constructions and your specific end use application.
- Please make final selection from actual swatch. To order samples go to [manningtoncommercial.com](https://www.manningtoncommercial.com) or call 800.241.2262 ext. 6913.

Moiré Collection

Style	Visible Light Modular (Non-Ortho Phthalate)	Visible Light Broadloom
Construction	Textured Patterned Loop	Textured Patterned Loop
Face Fiber	Antron® Legacy™ Type 6,6 Nylon	Antron® Legacy™ Type 6,6 Nylon
Dye Method	Solution / Yarn	Solution / Yarn
Gauge	5/64 (50.39 per 10 cm)	5/64 (50.39 per 10 cm)
Stitches Per Inch	12 (47.24 per 10 cm)	12 (47.24 per 10 cm)
Density	6,900 (256.39 kg/m³)	6,900 (256.39 kg/m³)
Pile Thickness	0.120" (3.05 mm)	0.120" (3.05 mm)
Weight	23 oz./sq. yd. (780 g/m²)	23 oz./sq. yd. (780 g/m²)
Backing Type	Infinity® Modular	UltraBac® RE, Integra HP®
Sizes	18" x 36" (45.72 x 91.44 cm)	12'6" (3.81 m)
Colors	8	8
Packaging	6.00 sq. yds. / 12 Tiles	N/A
Pattern Repeat	N/A	75" W x 77" L (190.50 x 195.58 cm)
Adhesive	Infinity® Adhesive	Mannington Ultra Adhesive, Mannington Integra-2 Adhesive
Installation Method	Vertical Ashlar, Horizontal Brick Ashlar, Herringbone	N/A
Testing		
Dimensional Stability AACHEN Test	Passes	Passes
Electrostatic Propensity (AATCC 134)	Less than 3.0 KV	Less than 3.0 KV
Radiant Panel (ASTM E648)	≥ 0.45 watts/cm², Passes (Class 1)	≥ 0.45 watts/cm², Passes (Class 1)
Smoke Density (ASTM E662)	≤ 450-Passes	≤ 450-Passes
Methenamine Pill Test (ASTM D2859)	Passes	Passes
Hexapod (ASTM D5252) TARR Rating	3.5	3.5
Environmental Data		
NSF / ANSI-140 Certification	Infinity® Modular - Gold	UltraBac® RE - Platinum, Integra HP® - Gold
Recycled Content	Contains Pre Consumer Recycled Content	
Indoor Air Quality	CRI Green Label Plus Certified	
Recyclability	LOOP®	
LEED Scoreboard	May contribute to LEED Credits LEED 2009: MRC5 Regional Material; MRc6 Rapidly Renewable Materials; IEQ4.1 Low Emitting Adhesives; IEQ4.3 Low Emitting Materials - Flooring LEED v4: Building Product Disclosure & Optimization - EPDs; Building Product Disclosure & Optimization - Sourcing Raw Materials; IEQc2 - Low Emitting Materials	
mindful Materials	Visit mM Origin website, mindfulmaterials.origin.build , for current transparency information	
Manufacturing	Calhoun, Georgia (USA) - ISO 14001 Registered	
Warranty		
	Limited Lifetime Wear & Backing Limited 15-Year XGUARD® Stain Resistant Limited 15-Year ColorSafe® Bleach Resistant	

- Specifications are based on averages from normal manufacturing tolerances. Such variations do not affect product performance.
- Protective chair pads are recommended under office chairs with roller castors to preserve appearance and avoid premature wear.
- As with all quality carpets, slight variation in color may occur from dye lot to dye lot.
- Backing or other materials may be changed without prior notice when shortages occur or when technological advancements provide improved product performance.
- This product is intended solely for use as an indoor floor covering and is not recommended or sold for any other purpose.
- The inherent characteristics of geometric linear patterns can result in double-dark or double-light lines at the seam and to some extent pattern run-off or bias. This is not a manufacturing defect, and as such, should be considered when selecting a modular carpet installation method.
- Cut piles, cut and loops, and tip-sheared constructions are not recommended for heavy commercial traffic, corridors or through channeled traffic. Please contact your Mannington representative for information regarding these constructions and your specific end use application.
- Please make final selection from actual swatch. To order samples go to manningtoncommercial.com or call 800.241.2262 ext. 6913.