

DIVERGENT COLLECTION





Designed carpet and VT,
designed together for
corporate, retail, and
healthcare markets.
Soft linear look, lovely
textures that fade in
and out.
Truly seamless transitions?
Yes!



Cover: CURRENT MODULAR - Stream 15844 (Installation - Horizontal Brick Ashlar)
Above: CURRENT MODULAR - Brim 12835 (Installation - Horizontal Brick Ashlar)

Construction	Textured Patterned Loop	Weight	18 oz/sq yd (610 g/m ²)
Face fiber	ECONYL® 100% regenerated Type 6 Nylon	Density	6,352 (236.03 Kg/m ³)
Dye method	Solution	Secondary backing	Infinity® Modular
Gauge	5/64 (50.39 per 10 cm)	Size	18" x 36" (45.72 x 91.44 cm)
Stitches per inch	11.8 (46.46 per 10 cm)	Installation	Horizontal Brick Ashlar
Pile thickness	0.102" (2.59 mm)		



FLOW MODULAR - Stream 15844 (Installation - Horizontal Brick Ashlar)

Construction	Textured Patterned Loop	Weight	18 oz/sq yd (610 g/m ²)
Face fiber	ECONYL® 100% regenerated Type 6 Nylon	Density	6,352 (236.03 Kg/m ³)
Dye method	Solution	Secondary backing	Infinity® Modular
Gauge	5/64 (50.39 per 10 cm)	Size	18" x 36" (45.72 x 91.44 cm)
Stitches per inch	11.8 (46.46 per 10 cm)	Installation	Horizontal Brick Ashlar
Pile thickness	0.102" (2.59 mm)		



FLOW MODULAR - Brim 12835 (Installation - Horizontal Brick Ashlar)



EBB MODULAR - Stream 15844 (Installation - Horizontal Brick Ashlar)

Construction	Textured Patterned Loop	Weight	18 oz/sq yd (610 g/m ²)
Face fiber	ECONYL® 100% regenerated Type 6 Nylon	Density	6,352 (236.03 Kg/m ³)
Dye method	Solution	Secondary backing	Infinity® Modular
Gauge	5/64 (50.39 per 10 cm)	Size	18" x 36" (45.72 x 91.44 cm)
Stitches per inch	11.8 (46.46 per 10 cm)	Installation	Horizontal Brick Ashlar
Pile thickness	0.102" (2.59 mm)		



EBB MODULAR - Brim 12835 (Installation - Horizontal Brick Ashlar)



CURRENT, EBB MODULAR - Stream 15844 (Installation - Horizontal Brick Ashlar)



Current - Barrier 81833
(Installation - Horizontal Brick Ashlar)



Reed 13839
(Installation - Horizontal Brick Ashlar)









Margin 34837
(Installation - Horizontal Brick Ashlar)



Tidal 85838
(Installation - Horizontal Brick Ashlar)



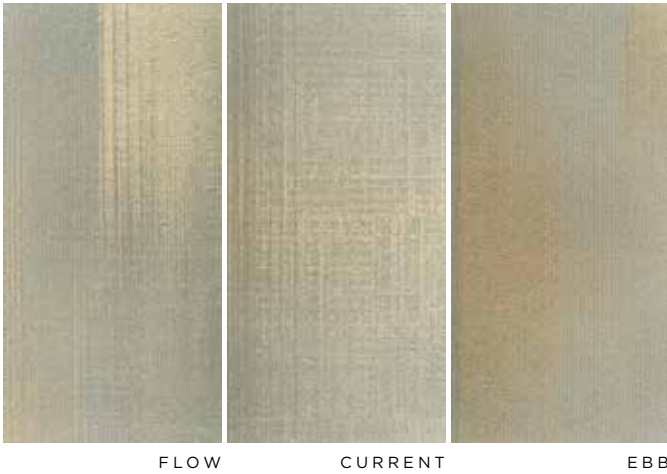
COLORWAYS

Twelve colors include palettes drawn from wood, soft metals and cool industrial materials. Patterns emphasize beauty with a soft linear look, lovely textures that fade in and out. Each colorway truly creates a seamless transition. Please reference the below photography and order a large 18” x 36” sample to verify the degree of fade in and out of each colorway.

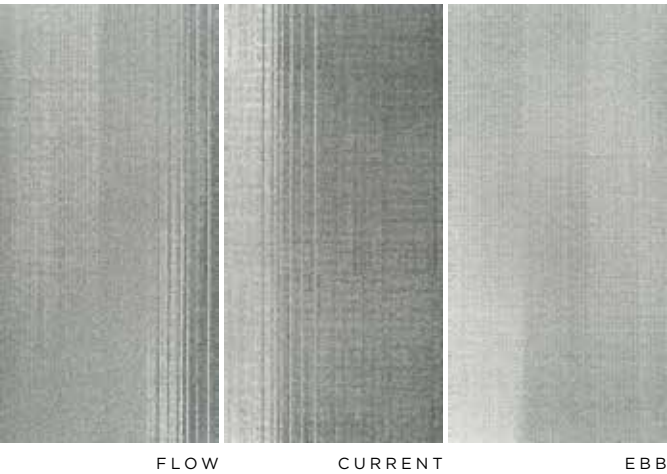
BARRIER 81833



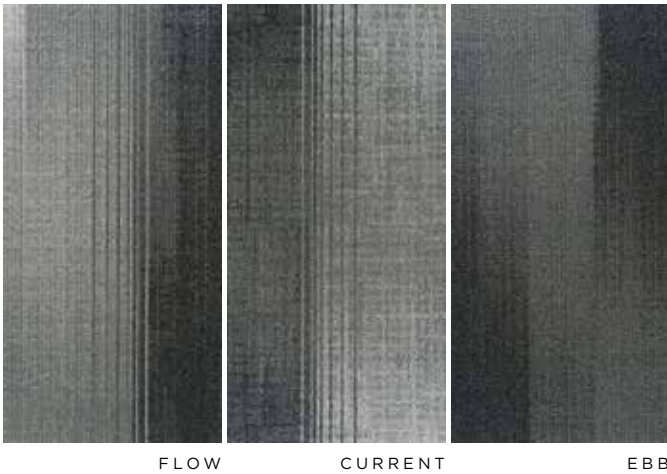
REED 13839



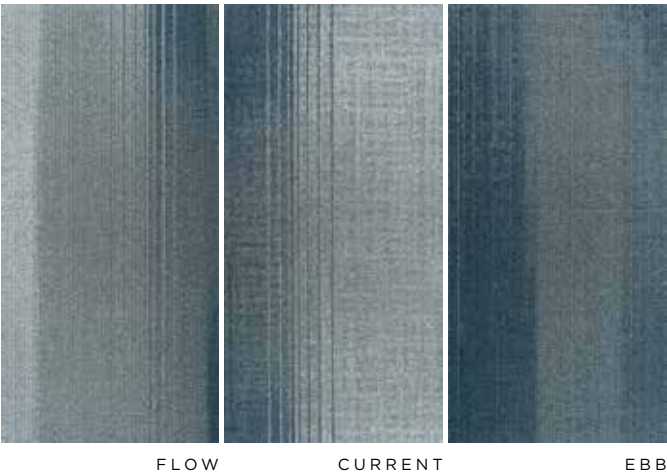
SILT 11834



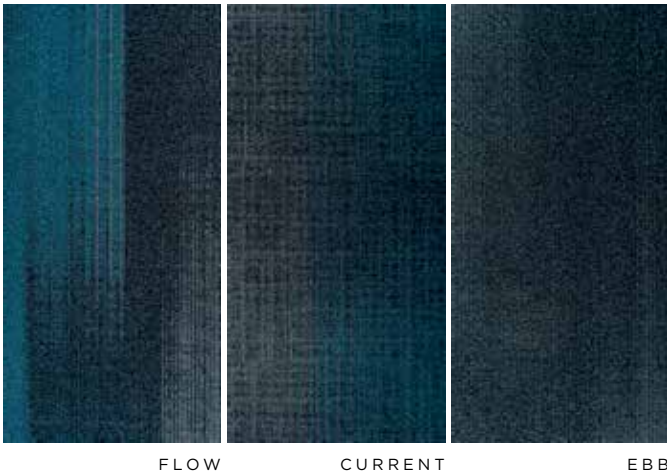
BRIM 12835



FERN 32836



STREAM 15844

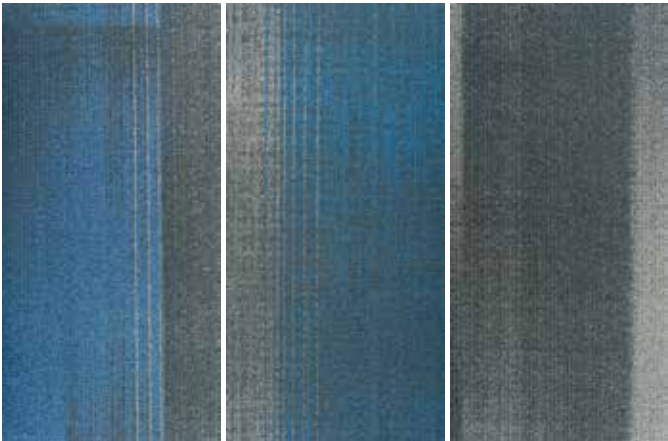


TUPELO 12841



FLOW CURRENT EBB

DELTA 14843



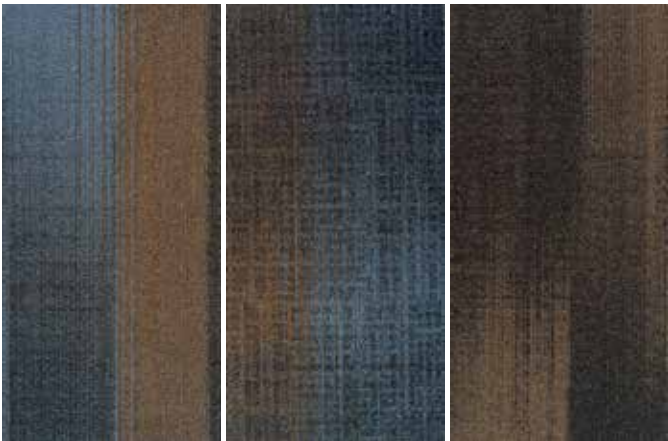
FLOW CURRENT EBB

MARGIN 34837



FLOW CURRENT EBB

TIDAL 85838



FLOW CURRENT EBB

MIRE 83840



FLOW CURRENT EBB

BOG 13842



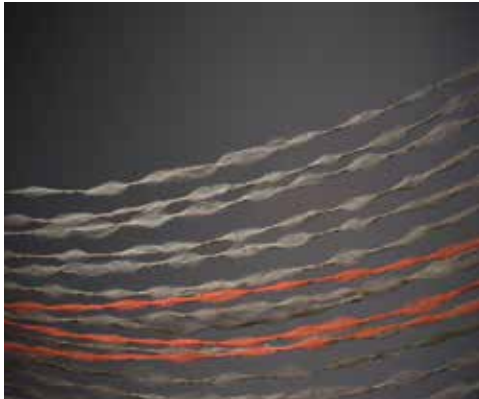
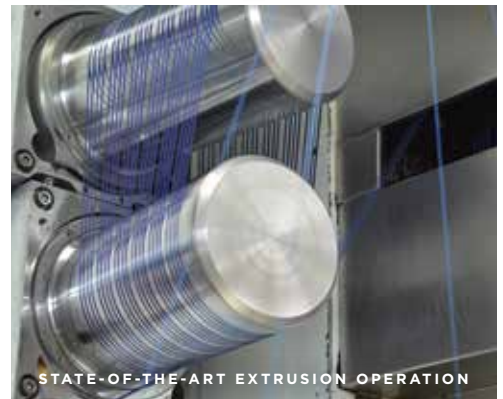
FLOW CURRENT EBB



ECONYL FIBERS: 138 COLORS. 100% REGENERATED.

Post-consumer waste is a by-product of industrial production. Our vision is to insure that industrial manufacturing goes hand in hand with respect for the environment. ECONYL® reduces the amount of global waste by collecting both pre and post-consumer waste, including spent carpet, fishing nets, fabrics, and industrial plastic components. In 2014, 57.2 million pounds of pre and post-consumer waste was reclaimed and regenerated into nylon. ECONYL® fibers contain 100% regenerated nylon with a minimum of 50% post-consumer content.

ECONYL® is engineered so it can be entirely regenerated again, and again. Pushing ever closer to Aquafil's ultimate goal of a fiber made from 100% post-consumer waste, while maintaining ultimate standards in performance and quality.



DIVERGENT COLLECTION



20








COLOR CHOICES

500

SQUARE YARD MINIMUM









In Divergent Collection for styles Current and Flow, select your own accent color from 20 ECONYL® 100% regenerated Type 6 Nylon fibers. Custom accents are not available for style Ebb.






PERFORMANCE AND FEATURES

	AVAILABLE SIZE	Available in 18" x 36" plank tile.
	ECONYL® FIBER	ECONYL® fibers contain 100% regenerated nylon with a minimum of 50% post-consumer content.
	COLORSAFE®	Proprietary Bleach Resistant Technology resists color fade-out from bleach spills and splashes. Limited 15-Year ColorSafe® Bleach Resistant Warranty.
	XGUARD®	XGUARD® Stain Resistant Technology offers the highest level of performance in permanent stain resistance. Protection against common stains and ease of maintenance results in significant long-term appearance retention and a lower total cost of ownership. Limited 15-Year XGUARD® Stain Resistant Warranty.
	INFINITY® MODULAR	Modular backing engineered for strong performance, with excellent tuft bind and dimensional stability. Resists delamination, edge ravel, pilling and fuzzing, and withstands aggressive wet cleanings. Available in standard 18" x 36" plank tiles. Infinity® modular contains pre-consumer recycled content. Certified NSF/ANSI-140 Gold.
	WARRANTY	This product is backed by our Limited Lifetime Wear & Backing Warranty.
	XPRESS	When you really need it now. Our innovative delivery program ensures that you get the carpet and hard surface products you need quickly and reliably. With product available to ship within 5 business days, Mannington's new Xpress program leads the industry in service. To see a full list of Mannington's Xpress products, visit www.mannington.com/commercial/xpress.aspx

SUSTAINABILITY

	ENVIRONMENTAL PRODUCT DECLARATION	EPDs communicate the comprehensive life cycle assessment of a product's environmental impact and facilitate transparency. Our EPDs conform to international standards and are 3rd party verified by SSC and NSF International.
---	-----------------------------------	--

	3RD PARTY CERTIFICATIONS	<p>Certifications help navigate the world of green marketing claims. So we invest in ISO-14001 and environmentally preferable product certifications including NSF/ANSI-140, NSF/ANSI-332, FloorScore, and Green Label Plus. All of our products may contribute to multiple LEED and Green Globe credits.</p>
	LOOP®	<p>We have a responsible end-of-life plan for the products we manufacture. Through our LOOP® reclamation, we take back post-consumer carpet and closed-loop recycle it back into carpet. We also have closed-loop recycling processes in place for our VCT and LVT products and produce the only carpet-to-hard surface flooring – resilient sheet with 35% recycled content.</p>
	RECYCLED CONTENT	<p>Mannington actively seeks out waste streams that clog America's landfills, looking for innovative ways to use them in new products. On average, 15 tons per month of drywall, the construction industry's largest waste stream, finds new life in our VCT products. We also reclaim post-consumer carpet and tile from other flooring companies, as well as tires, telephone books, automotive glass, and other waste streams that contribute to landfills, incorporating them into carpet and surface flooring. Additionally, ECONYL® nylon contains 100% regenerated nylon with a minimum of 50% post-consumer content.</p>
	SOLAR ARRAY	<p>At 3.3 acres, we have one of the largest solar arrays in the flooring industry generating 1,000,000 kilowatt hours annually.</p>
	ENERGY LEADERSHIP	<p>With one of the largest solar arrays in the flooring industry (3.3 acres in Salem NJ) and ambitious goals to improve energy efficiency by 25% over ten years, we have an ongoing partnership with the Department of Energy to lead manufacturing into smarter energy use, as well as to reduce related carbon emissions.</p>
	WATER REDUCTION	<p>Water is a precious natural resource and a key component in manufacturing. By investing in technology and a continual emphasis on efficiency and lean manufacturing, we have reduced our water use by more than 35% since 2007. We also actively help protect wetlands in the communities where we make flooring, automotive glass, and other waste streams that contribute to landfills, incorporating them into carpet and hard surface flooring.</p>
	US MANUFACTURING	<p>Mannington is a fourth generation, family-owned company deeply committed to U.S. manufacturing. We make flooring in seven communities across the U.S., allowing us to provide the highest levels of service and quality in the industry, while supporting local economies and crafting quality, American-made products.</p>
	SAMPLE RETURN	<p>We offer a postage-paid return label for every commercial product sample that we ship. So when you are finished with your project, you can return the sample. We will send it on to the next user; and at the end of its useful life, we donate samples to local charities, churches, schools and civic groups.</p>

	<p>PURPLE MARTINS</p>	<p>In the mid-1980s, we began attracting migrating birds called Purple Martins to our New Jersey manufacturing campus as a more natural alternative to the use of pesticides. This “Purple Martin Project” has proven to be an incredibly environmentally friendly and cost effective way to control insects. Our employees are engaged in the banding and tracking of the birds.</p>
	<p>HONEY BEES</p>	<p>In 2009, as part of an effort to show how an industrial enterprise can co-exist with the agricultural & farming community and positively contribute to both, Mannington’s New Jersey corporate site began to house honeybees, and now have 5 hives in Salem, NJ and 4 in Eustis, FL. The honey bees are thriving and each year we are able to enjoy and share the honey we produce.</p>
	<p>ISO 14001</p>	<p>ISO 14001 is a global environmental standard that provides a system for continual improvement in environmental performance.</p>
	<p>CRI GREEN LABEL PLUS</p>	<p>GL+ is an independent carpet testing program that exceeds the CHPS indoor environmental quality standards for low-emitting products used in commercial settings. All Mannington Commercial carpet products pass CRI Green Label Plus certification for low VOC emissions.</p>
	<p>CLIMATE REGISTRY</p>	<p>Mannington is dedicated to reducing our greenhouse gas emissions by 25% over 10 years. Since 2007, a 10% reduction can be attributed to energy efficiencies, process efficiencies, and use of renewable energy. Additional information can be found on theclimateregistry.org.</p>



- Specifications are based on averages from normal manufacturing tolerances. Such variations do not affect product performance.
- Protective chair pads are recommended under office chairs with roller casters to preserve appearance and to avoid premature wear.
- As with all quality carpets, slight variation in color may occur from dye lot to dye lot.
- Backings or other materials may be changed without prior notice when shortages occur or when technological advancements provide improved product performance.
- This product is intended solely for use as an indoor floor covering and is not recommended or sold for any other purpose.
- The inherent characteristics of geometric linear patterns can result in double-dark or double-light lines at the seam and to some extent pattern run-off or bias. This is not a manufacturing defect, and as such, should be considered when selecting a modular carpet installation method.