



Spin Collection

Mannington
COMMERCIAL



Cover: Disc Modular - Delta Blues 34828, **Equalizer Modular** - Fade 11836

Installation - Custom

Above: RPM Modular - Electronic 14824, **Mannington Select Collection Stone** - Celestial Moonrock MSC230

Carpet Installation - Custom



Channel Modular - Smooth Jazz 33824, **Disc Modular** - Smooth Jazz 33824
Installation - Custom



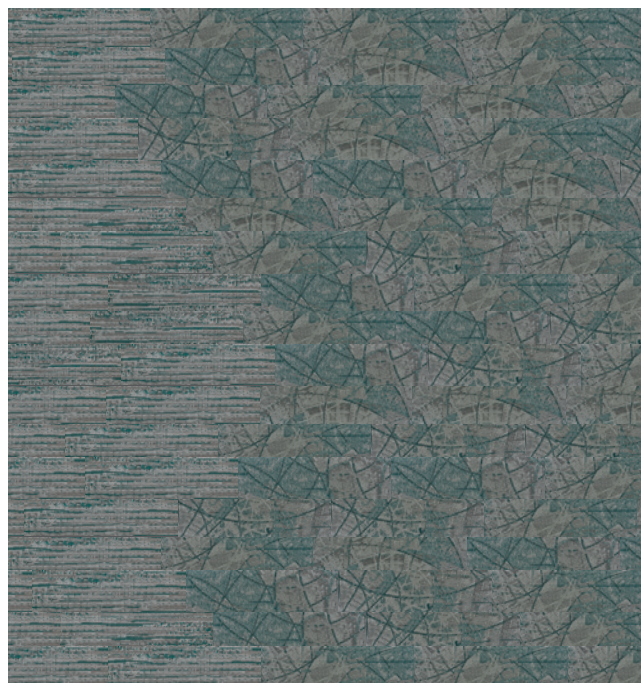
Equalizer Modular - Turn Table 14834, **RPM Modular** - New Wave 15823, Delta Blues 34828
Installation - **RPM Modular** - 3-Step Vertical Ashlar on 45° Angle, **Equalizer Modular** - Monolithic



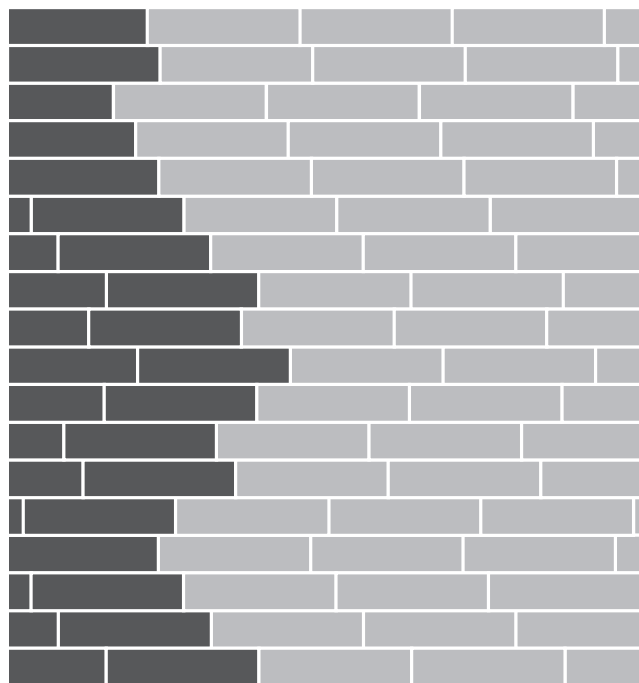
Channel Modular - Rock & Roll 83825, Electronic 14824, **Equalizer Modular** - Mixer 14837
Installation - Custom

Sample Installation

The Spin Collection can be installed in a variety of layouts to suit your design needs. Channel, Disc and RPM are larger patterns available in 12" x 48" planks and the same colorways, while Equalizer is a textural coordinate available in 24" x 24" tiles and complementary colorways. Define areas of activity in a space by using any of the styles in tandem, or by mixing colorways within a style – or even across styles. Here we present just one layout possibility with the Spin Collection.



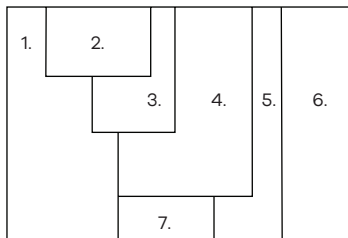
Channel Modular Smooth Jazz 33824 (left), **Disc Modular** Smooth Jazz 33824 (right)



Custom Installation

Spin Coordinates

Our flooring integrates seamlessly across product types and collections, so you can build an inspired flooring palette for your spaces without sacrificing form for function. Choose LVT in wood or abstract styles for a cool complement to the organic and geometric designs of Spin. Bring in patterns from our other carpet collections to underscore Spin's textural depth and richness.



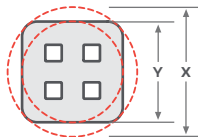
- | | |
|---|---------------------------------------|
| 1. Spin, Disc, Smooth Jazz | 5. Northern Wonder, Illusion, Glimpse |
| 2. Discovery, Unlock, Destiny | 6. Teles, Beach Stone |
| 3. Mannington Crown Collection,
Dusky Walnut | 7. Spin, RPM, Rock & Roll |
| 4. Spin, Channel, Rock & Roll | |



Antron® Lumena DNA™ type 6,6 nylon delivers permanent, built-in protection against stains and soil. The unique fiber shape also provides up to 2x better texture retention. As a result, your carpet stays beautiful and easy to clean for its entire lifecycle, helping reduce your total cost of ownership and helping your facility stay cleaner.

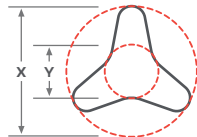
Better Shape, Better Performance

Antron® Lumena DNA™ has a sturdy, 4-hole hollow filament shape that makes it more resistant to crushing and matting than type 6 nylon.



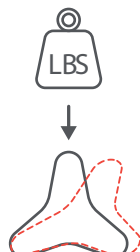
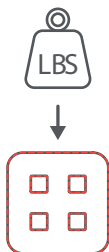
Antron® Lumena DNA™
4-hole hollow filament

< 1.5 MR (Modification Ratio)



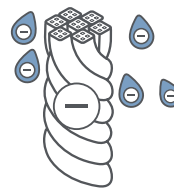
Common Type 6 Nylon
trilobal filament

+ 2 MR (Modification Ratio)



Permanent, Built-in Stain Resistance

Antron® Lumena DNA™ has the highest level of permanent stain resistance available on the market. Common type 6 nylon has a topically applied stain resistance that wears off over time. But with negatively charged polymers and a tighter molecular structure, Antron® Lumena DNA™ has permanent, built-in stain resistance, no topicals required.



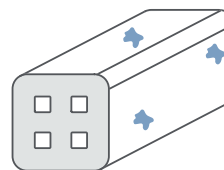
Antron® Lumena DNA™
4-hole hollow filament



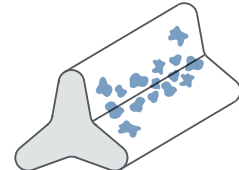
Common Type 6 Nylon
trilobal filament

Permanent, Built-in Soil Resistance

Unlike a typical type 6 nylon, the unique shape and low modification ratio of Antron® Lumena DNA™ does not provide anywhere for dirt to collect on the fiber. This ensures better soil release during vacuuming and hot water extraction. Between cleanings, the 4-hole hollow filament structure also diffuses light, reducing the appearance of soil and helping the carpet look cleaner.



Antron® Lumena DNA™
4-hole hollow filament



Common Type 6 Nylon
trilobal filament

Get into the Groove

Create rhythmic flooring compositions with the Spin Collection, modular carpet inspired by vinyl records and the process of record-making. Our designer visited United Records, the largest record maker in the U.S., to understand the craft by which sound becomes a tangible object. Spin explores the vast aesthetic and texture of the grooves, scratches and curves that give music its form in vinyl.



Spin Collection

Style	Channel Modular (Non-Ortho Phthalate)	Disc Modular (Non-Ortho Phthalate)
Construction	Tip-Sheared Patterned Loop	Textured Patterned Loop
Face Fiber	Antron® Lumena DNA™ Type 6,6 Nylon	Antron® Lumena DNA™ Type 6,6 Nylon
Dye Method	Solution	Solution
Gauge	1/10 (39.37 per 10 cm)	1/10 (39.37 per 10 cm)
Stitches Per Inch	10 (39.37 per 10 cm)	9 (35.43 per 10 cm)
Density	9,354 (347.58 kg/m³)	6,898 (256.32 kg/m³)
Pile Thickness	0.127" (3.23 mm)	0.167" (4.24 mm)
Weight	33 oz/yd² (1,119 g/m²)	32 oz/yd² (1,085 g/m²)
Backing Type	Infinity® 2 Modular	Infinity® 2 Modular
Sizes	12" x 48" (30.48 x 121.92 cm)	12" x 48" (30.48 x 121.92 cm)
Colors	10	10
Packaging	6.22 yd² / 14 Tiles	6.22 yd² / 14 Tiles
Adhesive	Infinity® Adhesive	Infinity® Adhesive
Installation Method	3-Step Vertical Ashlar	3-Step Vertical Ashlar
Testing		
Dimensional Stability (Aachen Test)	Passes	
Electrostatic Propensity (AATCC 134)	Less than 3.0 kV	
Flooring Radiant Panel (ASTM E648)	Passes - Class 1; ≥ 0.45 watts/cm²	
Smoke Density (ASTM E662)	Passes - ≤ 450	
Methenamine Pill Test (ASTM D2859)	Passes	
Hexapod (ASTM D5252) TARR	4	
Environmental Data		
NSF/ANSI 140 Certification	Infinity® 2 Modular - Gold	
Recycled Content	Contains recycled content	
Indoor Air Quality	CRI Green Label Plus Certified	
Product Declarations	EPD, HPD	
LEED Scoreboard	May contribute to LEED credits: LEED 2009: MRc5 Regional Materials; IEQ4.1 Low Emitting Adhesives; IEQ4.3 Low Emitting Materials - Flooring LEED v4: Building Product Disclosure & Optimization - EPDs; Building Product Disclosure & Optimization - Sourcing Raw Materials; IEQc2 - Low Emitting Materials	
mindful MATERIALS	Visit mM Origin website, mindfulmaterials.origin.build, for current transparency information	
Manufacturing	Calhoun, GA (USA) - ISO 14001 Registered	
Warranty		
Limited Lifetime Wear & Backing Warranty		

- Specifications are based on averages from normal manufacturing tolerances. Such variations do not affect product performance.
- Protective chair pads are recommended under office chairs with roller casters to preserve appearance and avoid premature wear.
- As with all quality carpets, slight variation in color may occur from dye lot to dye lot.
- Backing or other materials may be changed without prior notice when shortages occur or when technological advancements provide improved product performance.
- This product is intended solely for use as an indoor floor covering and is not recommended or sold for any other purpose.
- The inherent characteristics of geometric linear patterns can result in double-dark or double-light lines at the seam and to some extent pattern run-off or bias. This is not a manufacturing defect, and as such, should be considered when selecting a modular carpet installation method.
- Cut piles, cut and loops and tip-sheared constructions are not recommended for heavy commercial traffic, corridors or through channeled traffic. Please contact your Mannington Commercial representative for information regarding these constructions and your specific end use application.
- Please make your final selection from an actual swatch. To order samples, go to manningtoncommercial.com or call 800.241.2262 ext. 6913.

Spin Collection

Style	Equalizer Modular (Non-Ortho Phthalate)	RPM Modular (Non-Ortho Phthalate)
Construction	Textured Patterned Loop	Textured Patterned Loop
Face Fiber	Antron® Lumena DNA™ Type 6,6 Nylon	Antron® Lumena DNA™ Type 6,6 Nylon
Dye Method	Solution	Solution
Gauge	1/10 (39.37 per 10 cm)	1/10 (39.37 per 10 cm)
Stitches Per Inch	10.33 (40.67 per 10 cm)	11 (43.31 per 10 cm)
Density	7,200 (267.54 kg/m³)	8,608 (319.86 kg/m³)
Pile Thickness	0.110" (2.79 mm)	0.138" (3.51 mm)
Weight	22 oz/yd² (746 g/m²)	33 oz/yd² (1,119 g/m²)
Backing Type	Infinity® 2 Modular	Infinity® 2 Modular
Sizes	24" x 24" (60.96 x 60.96 cm)	12" x 48" (30.48 x 121.92 cm)
Colors	10	10
Packaging	6.22 yd² / 14 Tiles	6.22 yd² / 14 Tiles
Adhesive	Infinity® Adhesive	Infinity® Adhesive
Installation Method	Horizontal Brick Ashlar, Vertical Ashlar, Monolithic	3-Step Vertical Ashlar
Testing		
Dimensional Stability (Aachen Test)	Passes	
Electrostatic Propensity (AATCC 134)	Less than 3.0 kV	
Flooring Radiant Panel (ASTM E648)	Passes - Class 1; ≥ 0.45 watts/cm²	
Smoke Density (ASTM E662)	Passes - ≤ 450	
Methenamine Pill Test (ASTM D2859)	Passes	
Hexapod (ASTM D5252) TARR	Equalizer Modular - 3.5, RPM Modular - 4	
Environmental Data		
NSF/ANSI 140 Certification	Infinity® 2 Modular - Gold	
Recycled Content	Contains recycled content	
Indoor Air Quality	CRI Green Label Plus Certified	
Product Declarations	EPD, HPD	
LEED Scoreboard	May contribute to LEED credits: LEED 2009: MRc5 Regional Materials; IEQ4.1 Low Emitting Adhesives; IEQ4.3 Low Emitting Materials - Flooring LEED v4: Building Product Disclosure & Optimization - EPDs; Building Product Disclosure & Optimization - Sourcing Raw Materials; IEQc2 - Low Emitting Materials	
mindful MATERIALS	Visit mM Origin website, mindfulmaterials.origin.build, for current transparency information	
Manufacturing	Calhoun, GA (USA) - ISO 14001 Registered	
Warranty		
	Limited Lifetime Wear & Backing Warranty	

- Specifications are based on averages from normal manufacturing tolerances. Such variations do not affect product performance.
- Protective chair pads are recommended under office chairs with roller casters to preserve appearance and avoid premature wear.
- As with all quality carpets, slight variation in color may occur from dye lot to dye lot.
- Backing or other materials may be changed without prior notice when shortages occur or when technological advancements provide improved product performance.
- This product is intended solely for use as an indoor floor covering and is not recommended or sold for any other purpose.
- The inherent characteristics of geometric linear patterns can result in double-dark or double-light lines at the seam and to some extent pattern run-off or bias. This is not a manufacturing defect, and as such, should be considered when selecting a modular carpet installation method.
- Please make your final selection from an actual swatch. To order samples, go to manningtoncommercial.com or call 800.241.2262 ext. 6913.