



City Hub Collection

Mannington
COMMERCIAL



The City Hub Collection is inspired by the town square, a vibrant place where people gather to meet all kinds of daily needs, from business and healthcare to shopping and relaxing. Like the town square, City Hub is an expression of community: this resilient sheet collection features wood, stone and textile patterns that can be mixed and matched for unique flooring designs, in a palette that will fit any aesthetic.



Cover: Barrel Oak - Loire 4424, Textile - Flax 4621
Above: Dunham - Quartz 4522, Ridgewood - Red Maple 4454



Quantum Guard Pro provides exceptional results in the key performance areas of cleanability, stain protection and wear resistance, keeping your sheet flooring looking better, longer.

Easy to Clean

Combined with the sheet's subtle texture, Quantum Guard Pro is engineered for ease of cleaning. No polish needed.

Advanced Resistance to Stains

New urethane chemistry gives better protection from stains – even from difficult staining agents.

Advanced Resistance to Abrasion

New configuration of tough aluminum oxide particles provides continuous resistance to abrasion.

One of the highest-performing enhanced urethanes in the industry.

The Quantum Guard Pro Advantage

Quantum Guard Pro is specifically engineered to protect your flooring investment while saving you time and money on maintenance costs. The result? An easy-care floor with long-lasting beauty that will enhance your space for years to come.

Cleanability



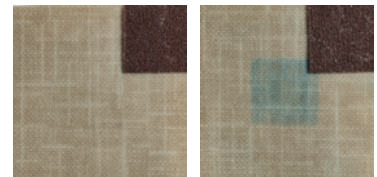
Quantum Guard Pro Soiled



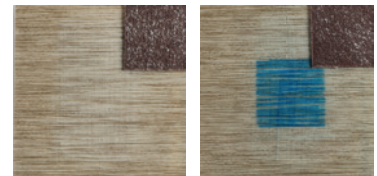
Quantum Guard Pro After Cleaning

Results after 10 passes with a wet microfiber mop on soiled floor.

Stain and Abrasion Resistance



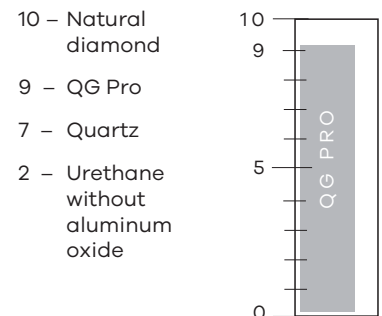
Quantum Guard Pro



Leading Competitor

Results after 1,000 passes with a sanding block, staining with a blue Sharpie and cleaning with an alcohol wipe.

Mohs Hardness Scale



City Hub Collection

Style	Barrel Oak, Ridgewood	Dunham	Textile
Construction	Heterogeneous Sheet (Non-ortho phthalate construction)	Heterogeneous Sheet (Non-ortho phthalate construction)	Heterogeneous Sheet (Non-ortho phthalate construction)
Classification	ASTM F1303 Type I, Grade 1, Class B	ASTM F1303 Type I, Grade 1, Class B	ASTM F1303 Type I, Grade 1, Class B
Total Thickness	0.080" (2.03 mm)	0.080" (2.03 mm)	0.080" (2.03 mm)
Wear Layer Thickness	0.020" (0.51 mm)	0.020" (0.51 mm)	0.020" (0.51 mm)
Wear Layer	Quantum Guard Pro®	Quantum Guard Pro®	Quantum Guard Pro®
Width	6' (1.83 m), 12' (3.66 m)	6' (1.83 m), 12' (3.66 m)	6' (1.83 m), 12' (3.66 m)
Colors	4 each style	4	4
Pattern Repeat	48" L x 48" W (1.22 x 1.22 m)	36" L x 36" W (0.91 x 0.91 m)	36" L x 72" W (0.91 x 1.83 m)
Packaging	6' - 30-50 yd² (25.0-41.8 m²) 12' - 30-100 yd² (25.0-83.6 m²)	6' - 30-50 yd² (25.0-41.8 m²) 12' - 30-100 yd² (25.0-83.6 m²)	6' - 30-50 yd² (25.0-41.8 m²) 12' - 30-100 yd² (25.0-83.6 m²)
Weight	4.90 lbs/yd² (2.66 kg/m²)	4.90 lbs/yd² (2.66 kg/m²)	4.90 lbs/yd² (2.66 kg/m²)
Adhesive	Porous & Non-porous Substrates: V-88 Full Spread, Transitional Pressure Sensitive, High Moisture V-95 Full Spread, 2-part Epoxy XpressStep for LVT & Sheet Vinyl Full Coverage Spray Porous Substrates Only: V-82 Full Spread Note: Must use V-95 or XpressStep adhesive under hospital beds and heavy rolling load areas. Use V-95 in Operating Rooms or where higher risk of topical moisture would be a concern.		
QuickStix®	Available with QuickStix® pre-applied adhesive, reducing time and labor required to install the flooring. QuickStix® floors can be used immediately after installation, even in extreme moisture areas.		
Seam Method	Mannington Commercial Weld Rods or MLG-33 Chemical Seam Sealer. Mannington Seam Coater Pen for high traffic areas. Note: Heat welding is the recommended procedure for healthcare and high traffic applications.		
Testing			
HUD/FHA	Meets / Exceeds		
ADAG (American Disability Act Guidelines)	Passes		
Flexibility (ASTM F137)	Passes - 1/4" Mandrel - No Crack/Break		
Static Load (ASTM F970)	Passes - Residual Indent ≤ 0.005"		
Static Load (ASTM F970 mod.)	Passes - 1,500 PSI; Residual Indent ≤ 0.005"		
Rolling Resistance/Caster Chair (ISO 4918)	25,000 Cycles, No Significant Change		
Short Term Residual Indentation (ASTM F1914/F1303)	Passes - Must Be ≤ 0.012"		
Flooring Radiant Panel (ASTM E648)	Passes - Class 1; ≥ 0.45 watts/cm²		
Smoke Density (ASTM E662)	Passes - ≤ 450		
Slip Resistance (ASTM C1028, Dry)	Passes - ≥ 0.5 Leather; 0.6 Rubber		
Acoustic IIC (ASTM E492)	50 - 6" Concrete with Drop Ceiling		
Acoustic STC (ASTM E90)	63 - 6" Concrete with Drop Ceiling		
Resistance to Light (ASTM F1515)	Passes - < 8 Delta E Color Change		
Chemical Resistance (ASTM F925)	Passes - No More Than Slight Change		
Resistance to Heat (ASTM F1514)	Passes - < 8 Delta E Color Change		
Resistance to Mold/Mildew (ASTM G21/E2180)	Passes - No More Than Slight Change		
Environmental Data			
Indoor Air Quality	FloorScore Certified; CDPH v1.1-2010		
Product Declarations	EPD		
LEED Scoreboard	May contribute to LEED credits: LEED 2009: MRc5 Regional Materials; IEQ4.1 Low Emitting Adhesives; IEQ4.3 Low Emitting Materials - Flooring LEED v4: Building Product Disclosure & Optimization - EPDs; Building Product Disclosure & Optimization - Sourcing Raw Materials; IEQc2 - Low Emitting Materials		
mindful MATERIALS	Visit mM Origin website, mindfulmaterials.origin.build, for current transparency information		
Manufacturing	Salem, NJ (USA) - ISO 14001 EMS Registered		
Warranty			
Limited 10 Year Commercial Warranty			

Note: Visual/Color variations can occur from roll to roll. This variation does not affect product performance.