

## Moiré Collection

The Moiré Collection was designed in collaboration with artist Gabriel Dawe and inspired by his art installations, in which he uses miles of thread in delicate color gradations to create unique shapes of depth and volume. The Moiré Collection translates the delicate color work and dynamic patterning of Dawe's art into a versatile flooring solution.



**Visible Light Broadloom** - Full Spectrum 52788



**Ray Tracing Modular** - Shine 15784;  
**Visible Light Modular** - Aura 24787 (inset)  
**Installation** - Herringbone



**Visible Light Modular** - Lumens 12782,  
Flux 72785 (inset)  
**Installation** - Vertical Ashlar (Flux turned  
90 degrees)

Crafted with purpose



**Pure Wavelength Modular** - Frequency 13783  
**Installation** - Horizontal Brick Ashlar



**Ray Tracing Modular** - Full Spectrum 52788,  
Prism 32786 (inset)  
**Installation** - Vertical Ashlar (Prism turned  
90 degrees)

**THREE PATTERNS EXPLORE THE MOIRE EFFECT  
IN EIGHT COLORWAYS THAT INCLUDE NEUTRALS,  
BRIGHTS AND A VIBRANT FULL SPECTRUM.**

#### Styles / Colors

- **Pure Wavelength**
  - 8 colors, 18" x 36" plank
  - Light and color-filled layers of intersecting lines
  - 22 oz. finished weight
- **Ray Tracing**
  - 8 colors, 18" x 36" plank
  - Playful, open pattern of striated color bands
  - 24 oz. finished weight
- **Visible Light**
  - 8 colors, 18" x 36" plank and 12'6" broadloom
  - Softly fragmented moiré pattern, more organic
  - Both platforms 23 oz. weight

#### Performance Benefits

- Antron® Legacy Type 6,6 Nylon provides superior cleanability, performance and appearance retention

#### Environmental Data

- Infinity® Modular backing contains pre-consumer recycled content, certified NSF/ANSI-140 Gold
- UltraBac® RE certified NSF/ANSI-140 Platinum, Integra HP® certified NSF/ANSI-140 Gold
- Product-specific Type III EPD, published HPD
- Fully recyclable via Mannington's LOOP® program

#### Warranty

- Limited Lifetime Wear and Backing Warranty
- Limited 15-year XGUARD® Stain Resistance Warranty
- Limited 15-year ColorSafe® Bleach Resistance Warranty

For more details, visit [manningtoncommercial.com](http://manningtoncommercial.com)

Each modular plank in the Moiré Collection shows a small section of a larger color gradient. A package of planks includes a random mix of sections from the gradient of your choice. The swatches shown here represent part of the visual of just one plank from each package, i.e., from each gradient or colorway.



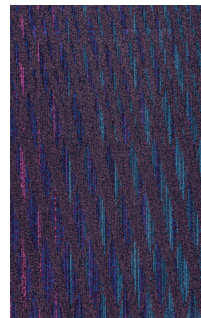
Lumens 12782



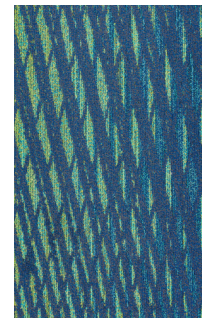
Frequency 13783



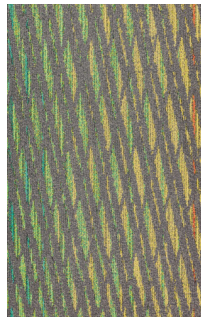
Shine 15784



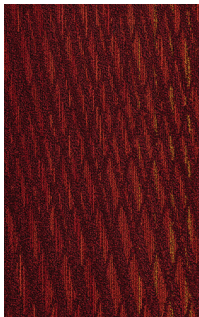
Aura 24787



Prism 32786



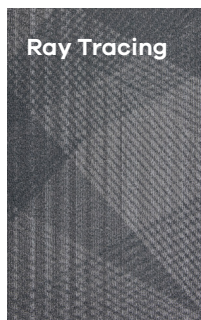
Full Spectrum 52788



Flux 72785



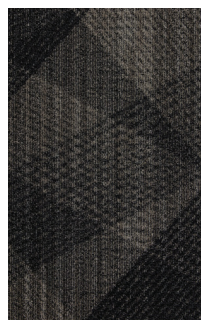
Beam 83781



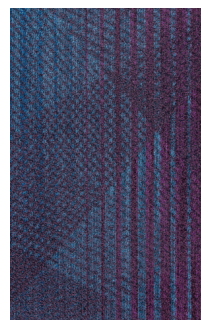
Lumens 12782



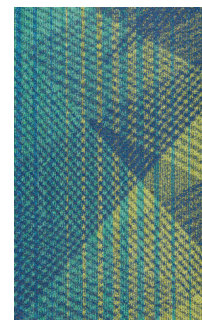
Frequency 13783



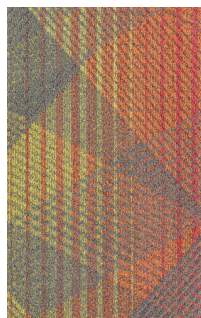
Shine 15784



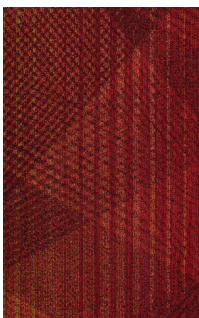
Aura 24787



Prism 32786



Full Spectrum 52788



Flux 72785



Beam 83781

Each modular plank in the Moiré Collection shows a small section of a larger color gradient. A package of planks includes a random mix of sections from the gradient of your choice. The swatches shown here represent part of the visual of just one plank from each package, i.e., from each gradient or colorway.

