

Scoot

Jon Molineux, Scoot's UK managing director made it very clear from the outset that he would be looking for the "Wow" factor when selecting the design for the company's headquarters. Breaking new ground was certainly part of the Scoot project brief. The headquarters of the company is known to millions of web surfers for its scoot.com search facility.

The "Wow" factor is present throughout the building. Precisely the kind of design dominant environment in which Amtico's innovative and highly individual products can make a major contribution. And it is in the restaurant that Amtico is used to its very best advantage.



Scoot

The ground floor restaurant has a drum shaped interactive zone where over 200m² of Amtico Stardust Canary is laid beneath a dropped ceiling feature designed to give an enclosed, protected feeling. A break in the 'drum' acts as the main entrance from where a pathway of Amtico Chameleon Treadplate snakes its way to a corner coffee bar. To the right of the 'snake' Amtico Marcasite floods over the rest of the area.

Throughout the rest of the building 1.5m circular pods covered in Stardust Canary are located to provide 'tea points'.

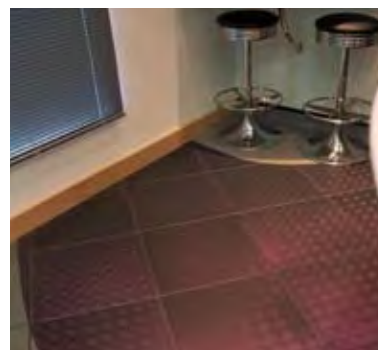
It was a tough and creatively demanding project. Fortunately Fran Hamilton of Maris Interiors feels she had the materials and support of an equally creative group of people and products from Amtico, which helped immensely in meeting the high standards the project required.

"There is a lot of creativity behind Amtico," says Fran Hamilton. "The company has a lot of affinity with designers and is always looking for new ideas and bringing out new products that are very much of today. Sometimes a new Amtico product is a creative solution in its own right; sometimes Amtico enables you to do things which simply weren't possible before!"

"Amtico comes up with lots of bubbly product ideas that allow designers to take the lead rather than play safe with timber flooring all the time. You can start looking at things like floating flooring, knowing that, with Amtico, the quality will continue to show through and never look kitsch."



Amtico in Office



Location

UK

Design

Maris Interiors

Product

GZ777 Stardust Canary

MR30 Marcasite

TM85 Chameleon Treadplate