



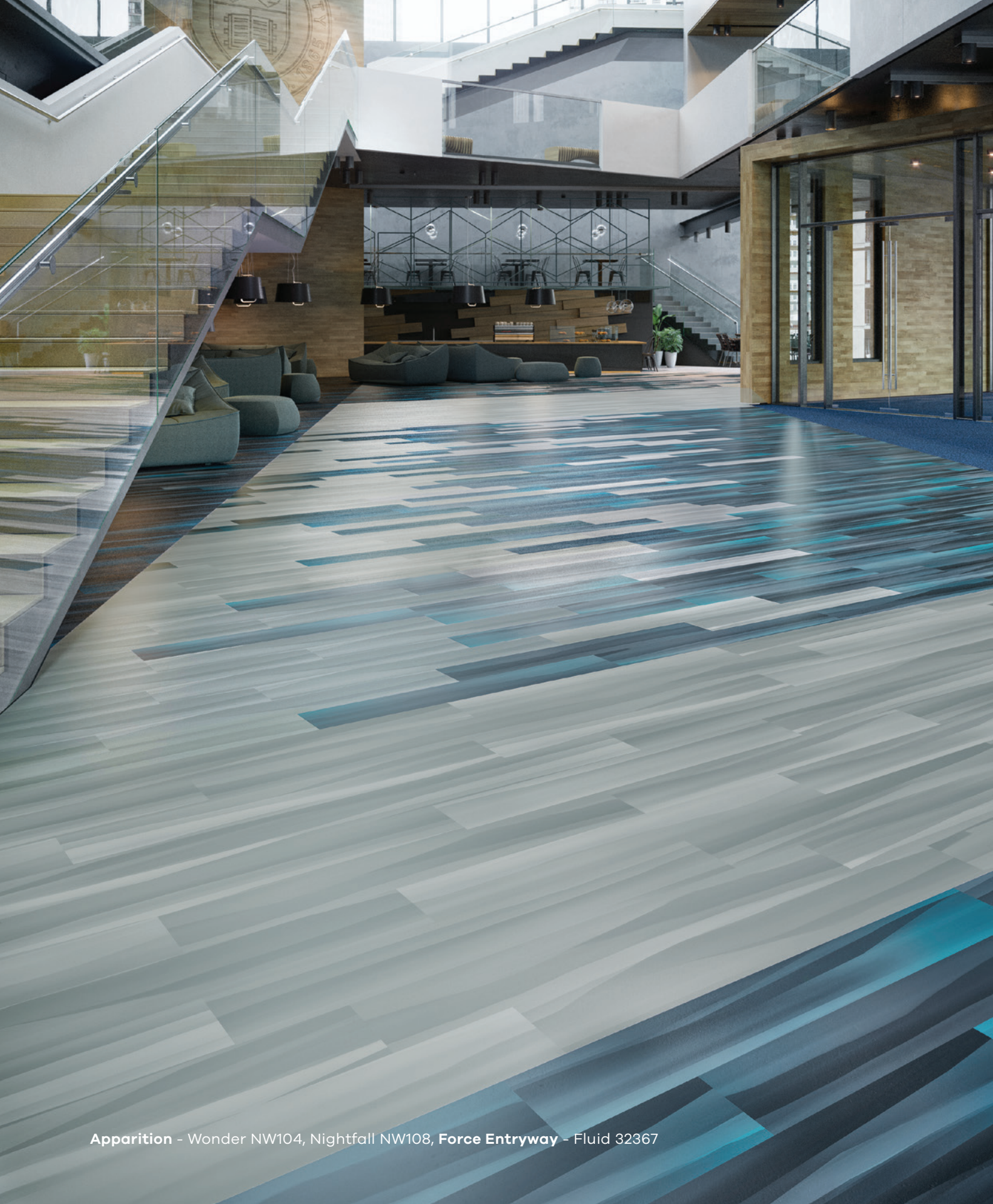
Arteca Northern Wonder Collection

Mannington
COMMERCIAL



Cover: **Aura** - Myth NW307

Above: **Aura** - Glimpse NW302, Memory NW303, **Visible Light Modular** - Frequency 13783



Apparition - Wonder NW104, Nightfall NW108, **Force Entryway** - Fluid 32367







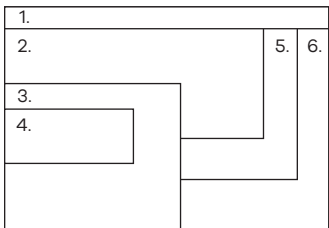
Apparition - Mist NW101



Aura - Mist NW301

Arteca Northern Wonder Coordinates

Our flooring integrates seamlessly across product types and collections, so you can build an inspired flooring palette for your spaces without sacrificing form for function. Play off of Northern Wonder’s abstract designs with rich textures and patterns from our carpet collections. Choose LVT in stone or wood visuals for a natural complement. Reinforce or extend your color palette with the perfectly matching solid tones of the Color Anchor Collection, which spans all product types.



- | | |
|--|--|
| 1. Heirloom, Relic, Accord | 5. Arteca Signature, Stone, Basilica Shell |
| 2. Heirloom, Memento, Accord | 6. Heirloom, Souvenir, Locket |
| 3. Color Anchor, Groove, Cottontail | |
| 4. Arteca Northern Wonder, Apparition, Glimpse | |



1.	2.	3.	4.	5.	6.
					7.
					8.

1. Paper, Creased Paper, Washi

2. Arteca Signature, Wood, Shibori Lapsang

3. Heirloom, Memento, Union

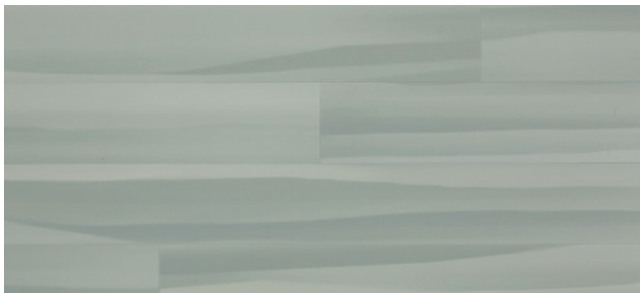
4. Arteca Northern Wonder, Illusion, Mist
5. Arteca Northern Wonder, Aura, Wonder

6. Heirloom, Souvenir, Trebon

7. Color Anchor, Stride, Midnight Twinkle

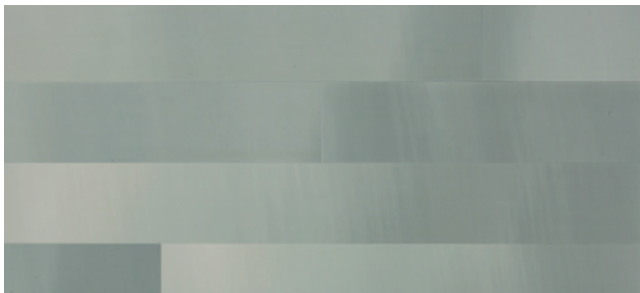
8. Bouclé, Teal

Arteca Northern Wonder Collection



Apparition

Mist NW101



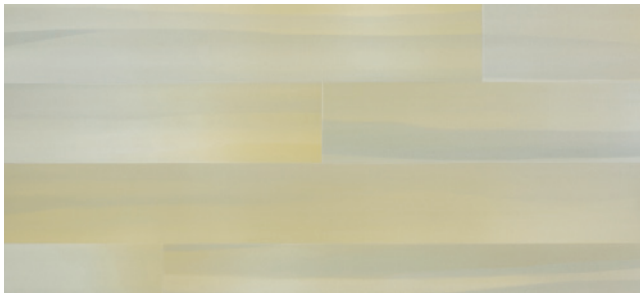
Aura

Mist NW301



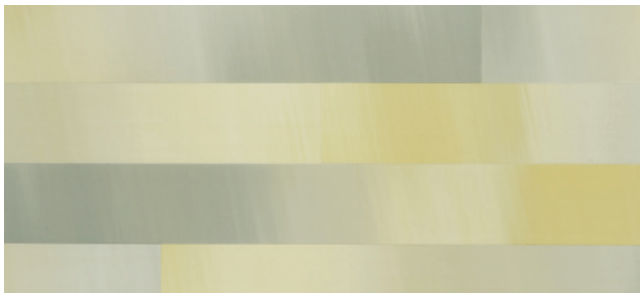
Illusion

Mist NW201



Apparition

Flare NW105



Aura

Flare NW305



Illusion

Flare NW205

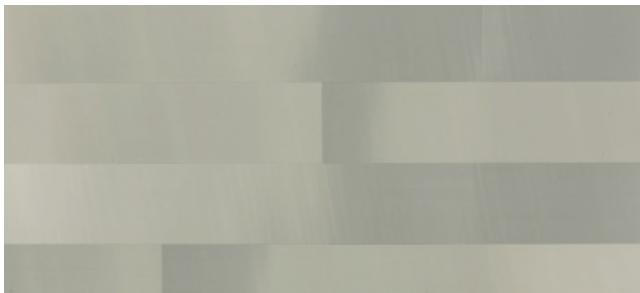
Images show multiple planks

Arteca Northern Wonder Collection



Apparition

Glimpse NW102



Aura

Glimpse NW302



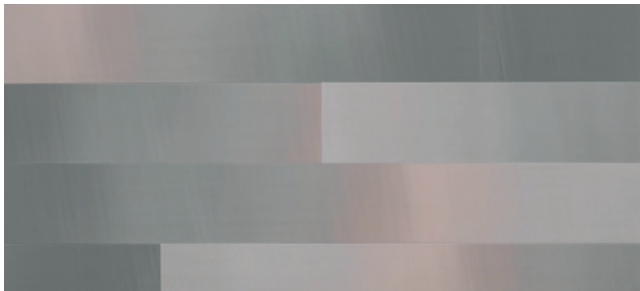
Illusion

Glimpse NW202



Apparition

Reverie NW106



Aura

Reverie NW306



Illusion

Reverie NW206

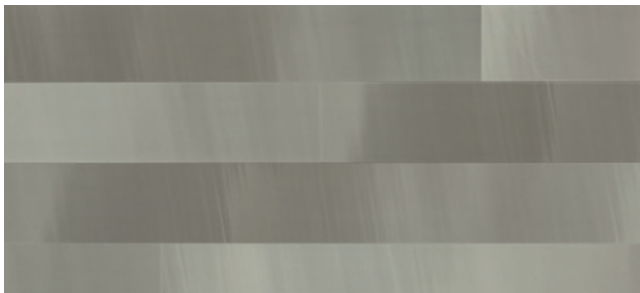
Images show multiple planks

Arteca Northern Wonder Collection



Apparition

Memory NW103



Aura

Memory NW303



Illusion

Memory NW203



Apparition

Myth NW107



Aura

Myth NW307

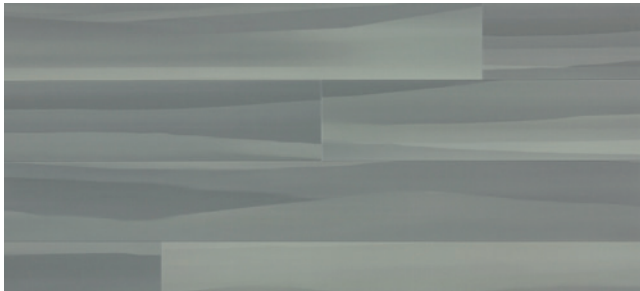


Illusion

Myth NW207

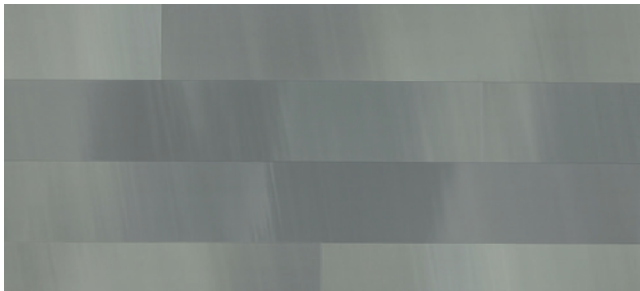
Images show multiple planks

Arteca Northern Wonder Collection



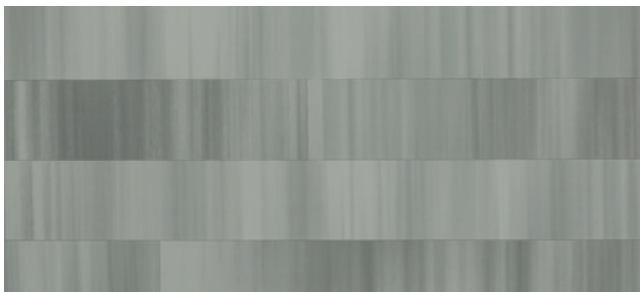
Apparition

Wonder NW104



Aura

Wonder NW304



Illusion

Wonder NW204



Apparition

Nightfall NW108



Aura

Nightfall NW308



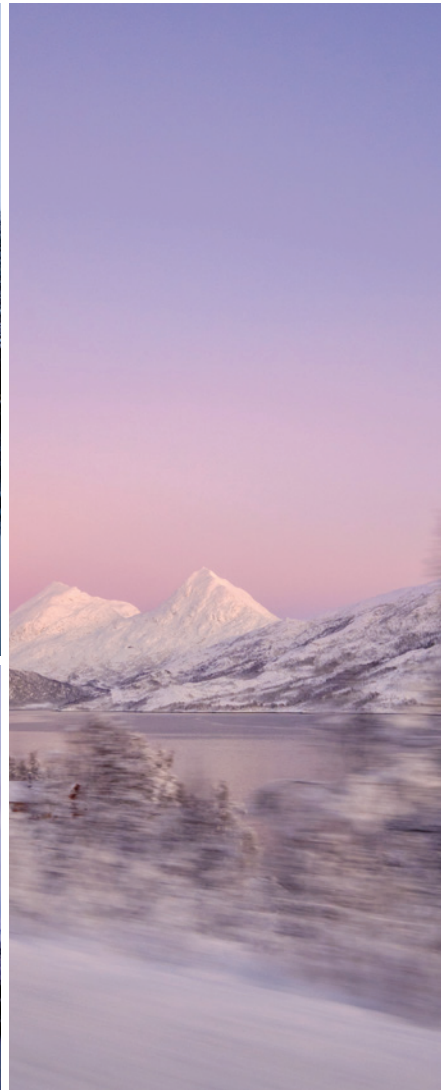
Illusion

Nightfall NW208

Images show multiple planks

A Mesmerizing Journey

Arteca Northern Wonder was inspired by a wintertime trek to see the northern lights. Suiting a variety of spaces, the abstract patterns build mesmerizing landscapes of celestial color, shadow and light. As digitally printed LVT, Northern Wonder allows for a large palette and crisp, complex patterns with incredible visual variation across each plank, for unique, memorable flooring designs.





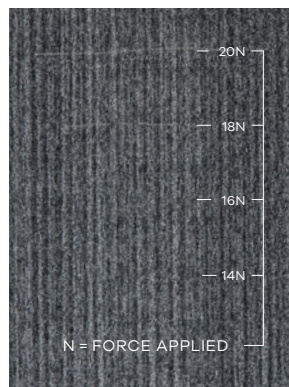
Success Is in Our Science

Introducing an advancement in our proven Quantum Guard technology: Quantum Guard Elite. This patent pending technology provides the ultimate solution for all aspects of LVT performance.

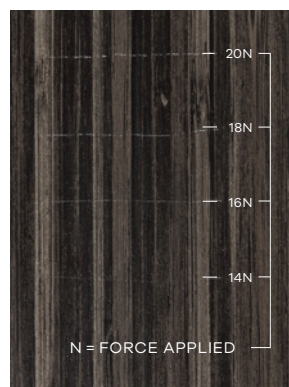
- Highest scratch resistance in the industry
- Engineered for best-in-class dimensional stability
- Superior impact resistance
- Cuts cleanly for highest quality installation
- Easy no-polish maintenance significantly reduces overall life cycle cost and total cost of ownership
- Advanced stain resistance

Outperforms in Scratch Resistance

Quantum Guard Elite



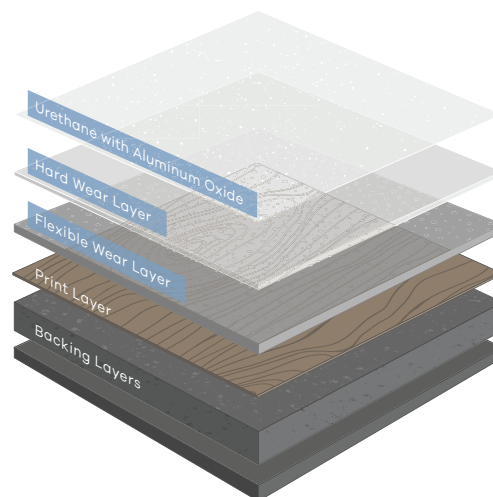
Leading Competitor



With a patent-pending two-part wear layer and aluminum oxide infused top coat, Quantum Guard Elite offers superior scratch resistance vs. the leading competitor.

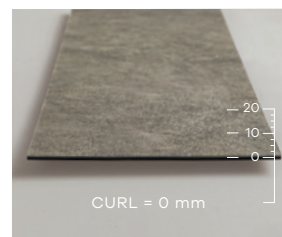
Complete Multi-Layered Protection

Quantum Guard Elite combines a hard wear layer and a flexible wear layer for superior durability with the added protection of our proprietary aluminum oxide technology.

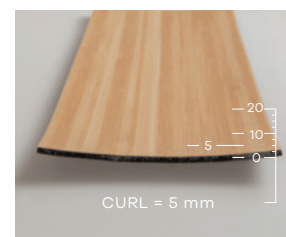


Best-in-Class Dimensional Stability

Quantum Guard Elite



Leading Competitor



LVT with Quantum Guard Elite is fully engineered to offer the perfect balance of hardness and flexibility, which helps prevent product failures in commercial environments. Products exposed to 80 °C for six hours.

Warranted to Work

Products with Quantum Guard Elite feature our Limited Quantum Guard Elite Wear Warranty and Limited Commercial Warranty.

Arteca Northern Wonder Collection Product Availability

Style	Color	Product Code	Price Point	Surface Finish - Ceramic	Quantum Guard Elite® Technology	Straight Grain		Cross Grain		Arteca Custom Design	Signature & Choice Layouts	Signature & Choice Borders & Motifs
						6" x 48" (152 x 1219 mm)	12" x 24" (305 x 610 mm)	6" x 48" (152 x 1219 mm)	12" x 24" (305 x 610 mm)			
Apparition	Flare	NW105	A	•	•	•	•			•	•	•
Apparition	Glimpse	NW102	A	•	•	•	•			•	•	•
Apparition	Memory	NW103	A	•	•	•	•			•	•	•
Apparition	Mist	NW101	A	•	•	•	•			•	•	•
Apparition	Myth	NW107	A	•	•	•	•			•	•	•
Apparition	Nightfall	NW108	A	•	•	•	•			•	•	•
Apparition	Reverie	NW106	A	•	•	•	•			•	•	•
Apparition	Wonder	NW104	A	•	•	•	•			•	•	•
Aura	Flare	NW305	A	•	•			•	•	•	•	•
Aura	Glimpse	NW302	A	•	•			•	•	•	•	•
Aura	Memory	NW303	A	•	•			•	•	•	•	•
Aura	Mist	NW301	A	•	•			•	•	•	•	•
Aura	Myth	NW307	A	•	•			•	•	•	•	•
Aura	Nightfall	NW308	A	•	•			•	•	•	•	•
Aura	Reverie	NW306	A	•	•			•	•	•	•	•
Aura	Wonder	NW304	A	•	•			•	•	•	•	•
Illusion	Flare	NW205	A	•	•			•	•	•	•	•
Illusion	Glimpse	NW202	A	•	•			•	•	•	•	•
Illusion	Memory	NW203	A	•	•			•	•	•	•	•
Illusion	Mist	NW201	A	•	•			•	•	•	•	•
Illusion	Myth	NW207	A	•	•			•	•	•	•	•
Illusion	Nightfall	NW208	A	•	•			•	•	•	•	•
Illusion	Reverie	NW206	A	•	•			•	•	•	•	•
Illusion	Wonder	NW204	A	•	•			•	•	•	•	•

Arteca Northern Wonder Collection

Style	Apparition, Aura, Illusion
Construction	Luxury Vinyl Tile Non-ortho Phthalate
Classification	ASTM F1700 Class III, Type A & B
Total Thickness	0.098" (2.5 mm)
Wear Layer Thickness	40 mil (1 mm)
Wear Layer	Quantum Guard Elite®
Edge Treatment	Micro-bevel
Sizes	6" x 48" (152 x 1219 mm) 12" x 24" (305 x 610 mm)
Colors	8 each style
Packaging	6" x 48" - 24 pcs, 48 ft ² (4.459 m ²), 32.064 lbs (14.54 kg) 12" x 24" - 18 pcs, 36 ft ² (3.345 m ²), 24.048 lbs (10.91 kg) Packaging may differ for QuickStix®
Adhesive	Porous & Non-porous Substrates: Arteca PSA Full Spread, Transitional Pressure Sensitive, High Moisture Arteca RP-18 Full Spread, One Component XpressStep for LVT & Sheet Vinyl Full Coverage Spray XpressStep Premium for LVT Full Coverage High Moisture Spray Porous Substrates Only: Arteca 373 Full Spread Note: Must use Arteca RP-18, XpressStep or XpressStep Premium adhesive under hospital beds and heavy rolling load areas. Use Arteca RP-18 where higher risk of topical moisture would be a concern.
QuickStix®	Available with QuickStix® pre-applied adhesive, reducing time and labor required to install the flooring. QuickStix® floors can be used immediately after installation, even in extreme moisture areas.
Installation Method	All arrows in the same direction. Planks should have end joints offset by at least 6" and staggered to create a random appearance.
Testing	
HUD/FHA	Passes
Flexibility (ASTM F137)	Passes - 1" Mandrel - No Crack/Break
Dimensional Stability (ASTM F2199)	Passes - Max 0.020 in/in ft
Squareness (ASTM F540)	Passes - Max 0.010"
Static Load (ASTM F970 mod.)	Passes - 2,000 PSI; Residual Indent ≤ 0.005"
Residual Indentation (ASTM F1914)	Passes - < 8% Avg / 10% Single Value
Flooring Radiant Panel (ASTM E648)	Passes - Class 1; ≥ 0.45 watts/cm ²
Smoke Density (ASTM E662)	Passes - ≤ 450
Slip Resistance (ASTM C1028)	Passes - ≥ 0.5 Leather; 0.6 Rubber
Resistance to Light (ASTM F1515)	Passes
Chemical Resistance (ASTM F925)	Passes
Resistance to Heat (ASTM F1514)	Passes
Environmental Data	
Rapidly Renewable Content	Contains 3% rapidly renewable resource content
Indoor Air Quality	FloorScore Certified; CDPH v1.1-2010
Product Declarations	EPD, HPD
LEED Scoreboard	May contribute to LEED credits: LEED 2009: MRc5 Regional Materials; MRc6 Rapidly Renewable Materials; IEQ4.1 Low Emitting Adhesives; IEQ4.3 Low Emitting Materials - Flooring LEED v4: Building Product Disclosure & Optimization - EPDs; Building Product Disclosure & Optimization - Sourcing Raw Materials; Building Product Disclosure & Optimization - Material Ingredients; IEQc2 - Low Emitting Materials
mindful MATERIALS	Visit mM Origin website, mindfulmaterials.origin.build, for current transparency information
Manufacturing	Madison, GA (USA) - ISO 14001 EMS & ISO 9001 QMS Registered
Warranty	
	Limited 25 Year Commercial Warranty Limited 25 Year Quantum Guard Elite® Wear Warranty