

new Work.

sylvan collection

sylvan structures I

sylvan structures II

spatial progressions

Where structure and nature meet.

Inspired by the intersection of the architectural and the natural, the Sylvan Collection lends an urban spirit to a broad platform of commercial spaces.

MANNINGTON
COMMERCIAL

SYLVAN

PERFORMANCE ATTRIBUTES

- Antron Lumena® Type 6,6 Nylon with DuraTech®
- Spatial Progressions available in 24" x 24" modular and 12' broadloom
- Sylvan Structures I and II available in 24" x 24" modular only
- Limited 15-Year XGUARD® Stain Resistant Warranty
- Limited 15-Year ColorSafe® Bleach Resistant Warranty

ENVIRONMENTAL ATTRIBUTES

- Infinity® RE Modular contains a minimum of 30% total recycled content, including a minimum of 10% post-consumer recycled content by total product weight. Certified NSF/ANSI-140 Platinum
- UltraBac® RE and Integra HP® RE contain a minimum of 10% post-consumer recycled content by total product weight. Certified NSF/ANSI-140 Platinum
- Meets CRI Green Label Plus
- Adhesive meets VOC content limit of SCAQMD Rule #1168
- ISO 14001 registered manufacturing facility
- Contributes to LEED Credits
- Carpet can be reclaimed through Mannington's LOOP® Carpet Reclamation Program

ULTRABAC® RE (spatial progressions only)

- Certified NSF/ANSI-140 Platinum
- Contains a minimum of 10% post-consumer recycled content by total product weight
- High tuft bind
- Resists edge ravel and delamination
- 12' broadloom
- Limited 15-Year Wear and Backing Warranty

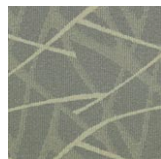
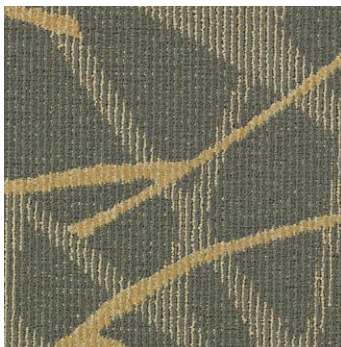
INTEGRA HP® RE (spatial progressions only)

- Certified NSF/ANSI-140 Platinum
- Contains a minimum of 10% post-consumer recycled content by total product weight
- Impermeable moisture barrier
- Eliminates wick-back staining
- Superior tuft bind wet/dry
- Superior dimensional stability
- Passes British Spill and Moisture Impact Tests
- Flexible in cold/hot environments
- 12' performance broadloom
- Limited Lifetime Wear and Backing Warranty

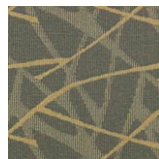
INFINITY® RE MODULAR

- Certified NSF/ANSI-140 Platinum
- Contains a minimum of 30% total recycled content, including a minimum of 10% post-consumer recycled content by total product weight
- Impermeable moisture barrier
- Eliminates wick-back staining
- Superior tuft bind wet/dry
- Superior dimensional stability
- Passes British Spill and Moisture Impact Tests
- 24" x 24" modular carpet tile
- Limited Lifetime Wear and Backing Warranty

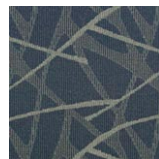
SYLVAN STRUCTURES I (shown) – colors available in Sylvan Structures I and II



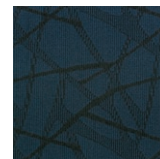
perch (1213)



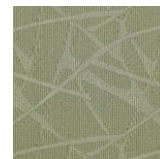
aerie (1315)



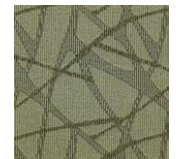
pastoral (3404)



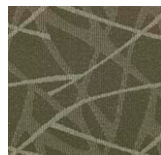
framework (3507)



formation (4206)



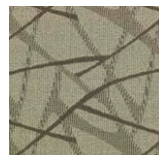
architecture (4302)



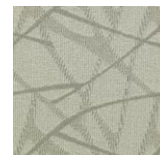
idyllic (4505)



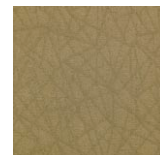
network (4508)



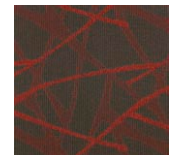
sanctuary (5101)



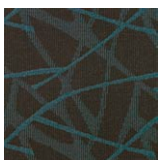
dwell (5116)



edifice (5309)



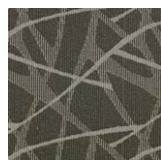
rustic (8503)



hierarchy (8510)

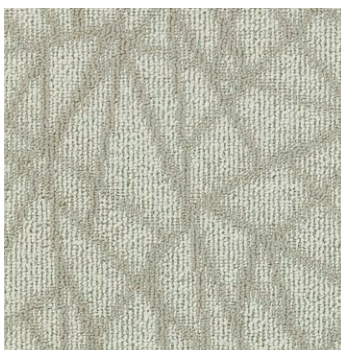


refuge (8511)

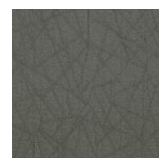


adobe (8512)

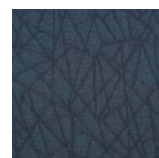
SPATIAL PROGRESSIONS



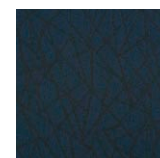
perch (1213)



aerie (1315)



pastoral (3404)



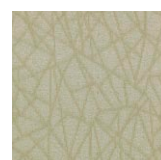
framework (3507)



formation (4206)



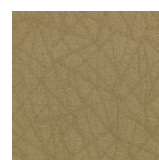
idyllic (4505)



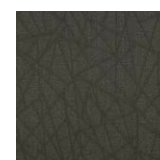
sanctuary (5101)



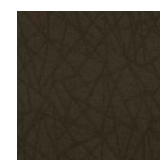
dwell (5116)



edifice (5309)



rustic (8503)



hierarchy (8510)

Choices that Work.

800 241 2262 manningtoncommercial.com

Printed on recycled paper. Please help us close the loop by recycling this brochure or by sharing it with another individual.

MANNINGTON
COMMERCIAL