



Infused Collection

Mannington
COMMERCIAL



Cover: Birds Eye - Energy IN210, Genius IN219, Element IN214, Virtue IN212
Above: All 5 Patterns - Multiple Colors



Broad Street - Unity IN241



Scratch That - Virtue IN202



Hustle - Virtue IN232



Bordado - Virtue IN222



Broad Street - Virtue IN242





All 5 Patterns - Spirit IN208, IN218, IN238, IN248

All 5 Patterns - Element IN204, IN214, IN224, IN234, IN244

Element



Birds Eye 9" x 9"
IN214



Broad Street 9" x 9"
IN244



Bordado 9" x 9" IN224



Scratch That 9" x 9"
IN204

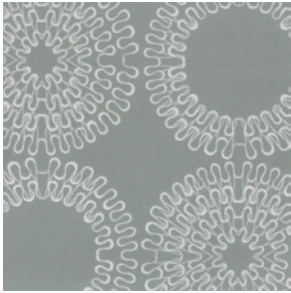


Hustle 9" x 9" IN234

Virtue



Birds Eye 9" x 9"
IN212



Broad Street 9" x 9"
IN242



Bordado 9" x 9" IN222



Scratch That 9" x 9"
IN202

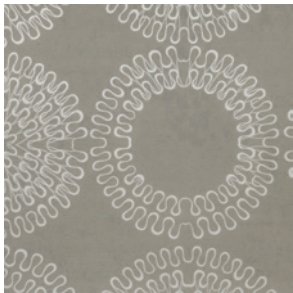


Hustle 9" x 9" IN232

Essence



Birds Eye 9" x 9"
IN213



Broad Street 9" x 9"
IN243



Bordado 9" x 9" IN223



Scratch That 9" x 9"
IN203

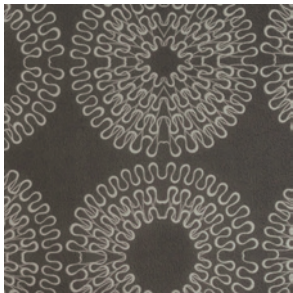


Hustle 9" x 9" IN233

Unity



Birds Eye 9" x 9"
IN211



Broad Street 9" x 9"
IN241



Bordado 9" x 9" IN221



Scratch That 9" x 9"
IN201

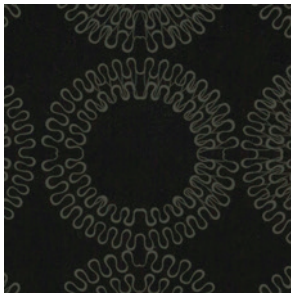


Hustle 9" x 9" IN231

Generosity



Birds Eye 9" x 9"
IN216



Broad Street 9" x 9"
IN246



Bordado 9" x 9" IN226



Scratch That 9" x 9"
IN206

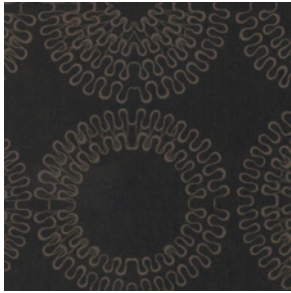


Hustle 9" x 9" IN236

Root



Birds Eye 9" x 9"
IN215



Broad Street 9" x 9"
IN245



Bordado 9" x 9" IN225



Scratch That 9" x 9"
IN205



Hustle 9" x 9" IN235

Energy



Birds Eye 9" x 9"
IN210



Broad Street 9" x 9"
IN240



Bordado 9" x 9" IN220



Scratch That 9" x 9"
IN200

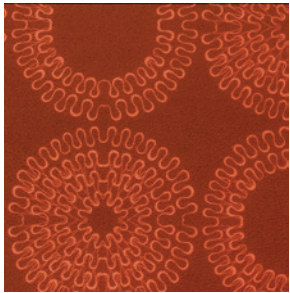


Hustle 9" x 9" IN230

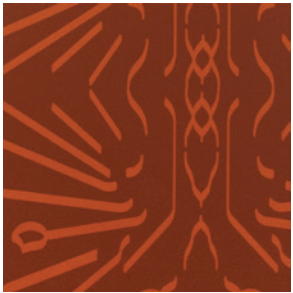
Soul



Birds Eye 9" x 9"
IN217



Broad Street 9" x 9"
IN247



Bordado 9" x 9" IN227



Scratch That 9" x 9"
IN207

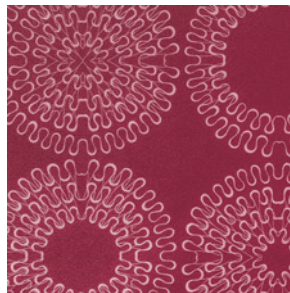


Hustle 9" x 9" IN237

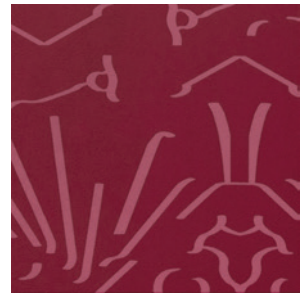
Spirit



Birds Eye 9" x 9"
IN218



Broad Street 9" x 9"
IN248



Bordado 9" x 9" IN228



Scratch That 9" x 9"
IN208

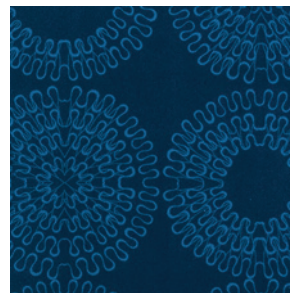


Hustle 9" x 9" IN238

Genius



Birds Eye 9" x 9"
IN219



Broad Street 9" x 9"
IN249



Bordado 9" x 9" IN229



Scratch That 9" x 9"
IN209



Hustle 9" x 9" IN239



QUANTUM GUARD®
elite

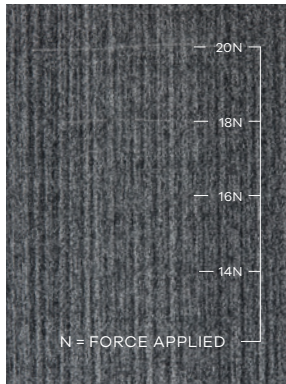
Success Is in Our Science

Introducing an advancement in our proven Quantum Guard technology: Quantum Guard Elite. This patent pending technology provides the ultimate solution for all aspects of LVT performance.

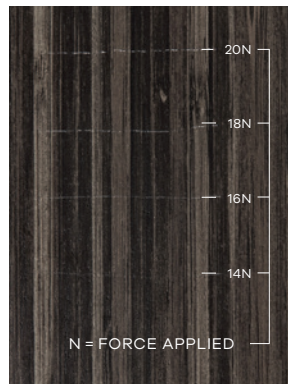
- Highest scratch resistance in the industry
- Engineered for best-in-class dimensional stability
- Superior impact resistance
- Cuts cleanly for highest quality installation
- Easy no-polish maintenance significantly reduces overall life cycle cost and total cost of ownership
- Advanced stain resistance

Outperforms in Scratch Resistance

Quantum Guard Elite



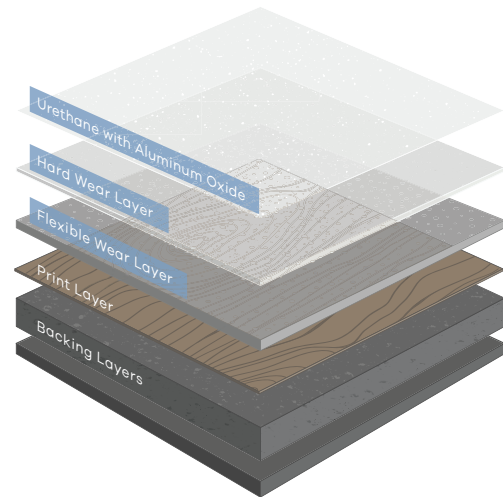
Leading Competitor



With a patent-pending two-part wear layer and aluminum oxide infused top coat, Quantum Guard Elite offers superior scratch resistance vs. the leading competitor.

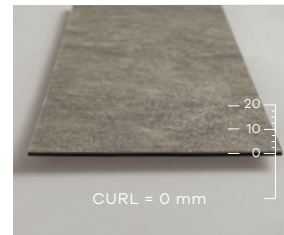
Complete Multi-Layered Protection

Quantum Guard Elite combines a hard wear layer and a flexible wear layer for superior durability with the added protection of our proprietary aluminum oxide technology.

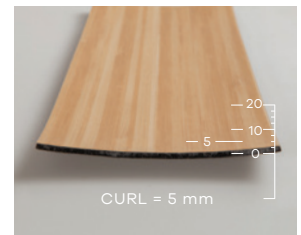


Best-in-Class Dimensional Stability

Quantum Guard Elite



Leading Competitor



LVT with Quantum Guard Elite is fully engineered to offer the perfect balance of hardness and flexibility, which helps prevent product failures in commercial environments. Products exposed to 80 °C for six hours.

Warranted to Work

Products with Quantum Guard Elite feature our Limited Quantum Guard Elite Wear Warranty and Limited Commercial Warranty.

A Cultural Collaboration

Reflecting a collaborative “more is more” mindset, Mannington Commercial and ONE Global Design present the Infused Collection: LVT in a mosaic of five sophisticated, graphic patterns, inspired by five city cultures, connected through line quality and a palette of bright and neutral colors. Mix the patterns or use them individually to create spaces of diverse community.



Infused Collection

Style	Birds Eye, Bordado, Broad Street, Hustle, Scratch That
Construction	Luxury Vinyl Tile Non-ortho Phthalate
Classification	ASTM F1700 Class III, Type B
Total Thickness	0.098" (2.5 mm)
Wear Layer Thickness	20 mil (0.51 mm)
Wear Layer	Quantum Guard Elite®
Edge Treatment	Micro-bevel
Sizes	9" x 9" (229 x 229 mm) 2.5" x 36" (64 x 915 mm)
Colors	10 each style
Packaging	9" x 9" - 80 pcs, 45 ft² (4.181 m²), 30.06 lbs (13.63 kg) 2.5" x 36" - 72 pcs, 45 ft² (4.181 m²), 30.06 lbs (13.63 kg) Packaging may differ for QuickStix®
Adhesive	Porous & Non-porous Substrates: Amtico PSA Full Spread, Transitional Pressure Sensitive, High Moisture Amtico RP-18 Full Spread, One Component XpressStep for LVT & Sheet Vinyl Full Coverage Spray XpressStep Premium for LVT Full Coverage High Moisture Spray Porous Substrates Only: Amtico 373 Full Spread Note: Must use Amtico RP-18, XpressStep or XpressStep Premium adhesive under hospital beds, and heavy rolling areas. Use Amtico RP-18 where higher risk of topical moisture would be a concern
QuickStix®	Available with QuickStix® pre-applied adhesive, reducing time and labor required to install the flooring. QuickStix® floors can be used immediately after installation, even in extreme moisture areas.
Installation Method	All arrows in the same direction. Planks should have end joints offset by at least 6" and staggered to create a random appearance. Tiles should be installed block or staggered; when quarter turned, arrows should alternate.
Testing	
HUD/FHA	Passes
Flexibility (ASTM F137)	Passes - 1" Mandrel - No Crack/Break
Dimensional Stability (ASTM F2199)	Passes - Max 0.020 in/in ft
Squareness (ASTM F540)	Passes - Max 0.010"
Static Load (ASTM F970 mod.)	Passes - 2,000 PSI; Residual Indent ≤ 0.005"
Residual Indentation (ASTM F1914)	Passes - < 8% Avg / 10% Single Value
Flooring Radiant Panel (ASTM E648)	Passes - Class 1; ≥ 0.45 watts/cm²
Smoke Density (ASTM E662)	Passes - ≤ 450
Slip Resistance (ASTM C1028)	Passes - ≥ 0.5 Leather; 0.6 Rubber
Resistance to Light (ASTM F1515)	Passes
Chemical Resistance (ASTM F925)	Passes
Resistance to Heat (ASTM F1514)	Passes
Environmental Data	
Rapidly Renewable Content	Contains 2% rapidly renewable resource content
Indoor Air Quality	FloorScore Certified; CDPH v1.1-2010
Product Declarations	EPD, HPD
LEED Scoreboard	May contribute to LEED credits: LEED 2009: MRc5 Regional Materials; MRc6 Rapidly Renewable Materials; IEQ4.1 Low Emitting Adhesives; IEQ4.3 Low Emitting Materials - Flooring LEED v4: Building Product Disclosure & Optimization - EPDs; Building Product Disclosure & Optimization - Sourcing Raw Materials; Building Product Disclosure & Optimization - Material Ingredients; IEQc2 - Low Emitting Materials
mindful MATERIALS	Visit mM Origin website, mindfulmaterials.origin.build, for current transparency information
Manufacturing	Madison, GA (USA) - ISO 14001 EMS & ISO 9001 QMS Registered
Warranty	
	Limited 15 Year Commercial Warranty Limited 15 Year Quantum Guard Elite® Wear Warranty