

INTRINSIC COLLECTION



MANNINGTON  
COMMERCIAL





**Cover: MAGNIFY MODULAR - Justice 43016, Authenticity 13002 (Installation - Vertical Ashlar)**

**Above: CONFLUENCE MODULAR - Authenticity 13002 (Installation - Vertical Ashlar)**

Construction	Patterned Loop	Weight	24 oz/sq yd (814 g/m <sup>2</sup> )
Face fiber	Antron® Lumena™ Type 6,6 Nylon	Density	6,646 (246.95 Kg/m <sup>3</sup> )
Dye method	Solution	Secondary backing	Infinity® Modular
Gauge	5/64 (50.39 per 10 cm)	Size	18" x 36" (45.72 x 91.44 cm)
Stitches per inch	11 (43.31 per 10 cm)	Installation	Vertical Ashlar
Pile thickness	0.130" (3.30 mm)		





CONFLUENCE MODULAR - Optimism 81010, Security 63014 (Installation - Vertical Ashlar)





### INTERTWINE MODULAR - Influence 11001 (Installation - Vertical Ashlar)

Construction	Tip-Shear Patterned Loop	Finished weight	24 oz/sq yd (814 g/m <sup>2</sup> )
Face fiber	Antron® Lumena™ Type 6,6 Nylon	Density	5,684 (211.21 Kg/m <sup>3</sup> )
Dye method	Solution	Secondary backing	Infinity® Modular
Gauge	5/64 (50.39 per 10 cm)	Size	18" x 36" (45.72 x 91.44 cm)
Stitches per inch	10.33 (40.67 per 10 cm)	Installation	Vertical Ashlar
Pile thickness	0.152" (3.86 mm)		





INTERTWINE MODULAR - Optimism 81010, Security 63014 (Installation - Vertical Ashlar)





**MAGNIFY MODULAR - Authenticity 13002 (Installation - Vertical Ashlar)**

Construction	Textured Patterned Loop	Weight	34 oz/sq yd (1,153 g/m <sup>2</sup> )
Face fiber	Antron® Lumena™ Type 6,6 Nylon	Density	8,383 (311.49 Kg/m <sup>3</sup> )
Dye method	Solution	Secondary backing	Infinity® Modular
Gauge	5/64 (50.39 per 10 cm)	Size	18" x 36" (45.72 x 91.44 cm)
Stitches per inch	6 (23.62 per 10 cm)	Installation	Vertical Ashlar
Pile thickness	0.146" (3.71 mm)		





MAGNIFY MODULAR - Optimism 81010, Security 63014 (Installation - Vertical Ashlar)





**MERGE MODULAR - Influence 11001 (Installation - Horizontal Brick Ashlar)**

Construction	Tip-Shear Patterned Loop	Finished weight	24 oz/sq yd (814 g/m <sup>2</sup> )
Face fiber	Antron® Lumena™ Type 6,6 Nylon	Density	6,857 (254.79 Kg/m <sup>3</sup> )
Dye method	Solution	Secondary backing	Infinity® Modular
Gauge	5/64 (50.39 per 10 cm)	Size	18" x 36" (45.72 x 91.44 cm)
Stitches per inch	11 (43.31 per 10 cm)	Installation	Vertical Ashlar, Horizontal Brick Ashlar, Monolithic
Pile thickness	0.126" (3.20 mm)		



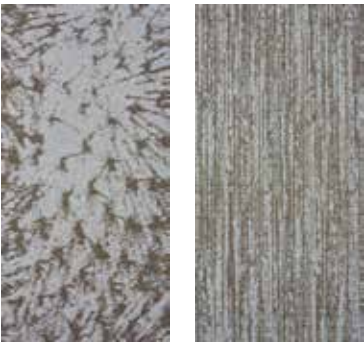
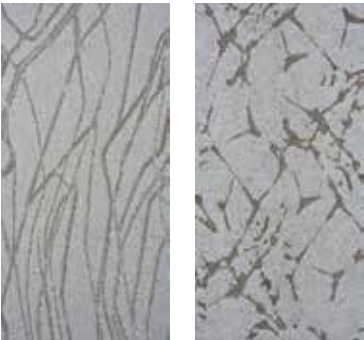


**MERGE MODULAR - Optimism 81010, Security 63014, Fairness 81004**  
**(Installation - Horizontal Brick Ashlar)**

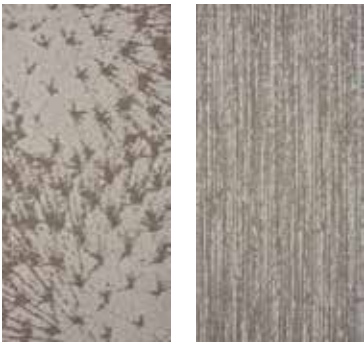
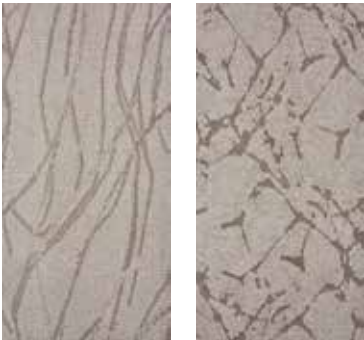


COLORWAYS

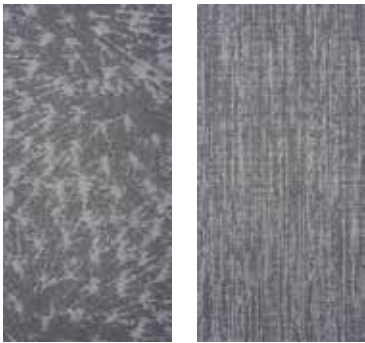
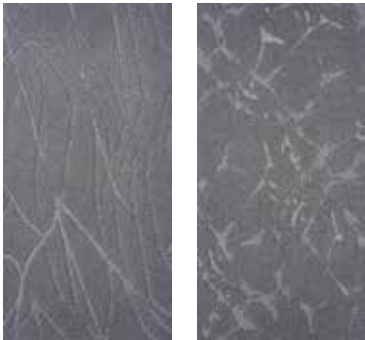
A neutral palette with dynamic pops of color, creating juxtapositions of soft and warm, subtle and vibrant. The collection creates a welcoming atmosphere in any space, and works especially well in corporate settings.



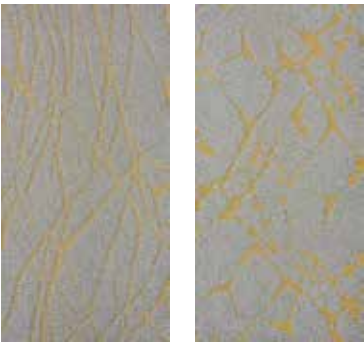
INFLUENCE 11001



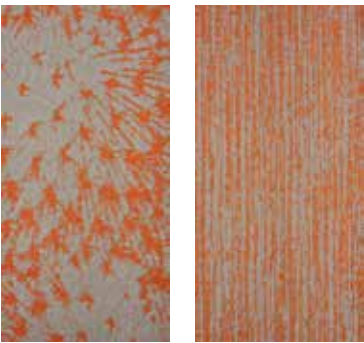
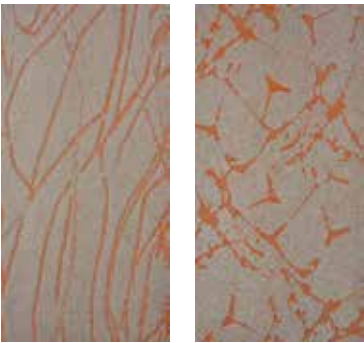
FAIRNESS 81004



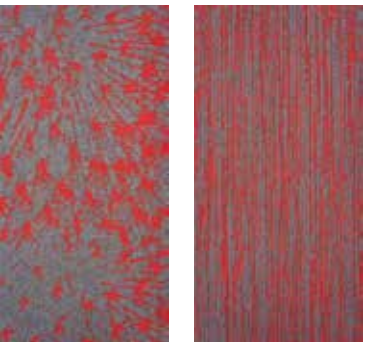
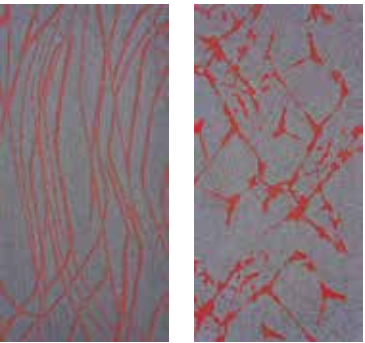
AUTHENTICITY 13002



POISE 11007



OPTIMISM 81010



DESIRE 13008





COMPASSION 84005



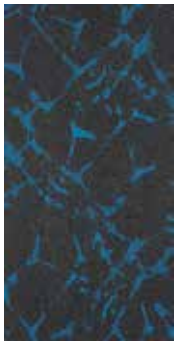
IDENTITY 15003



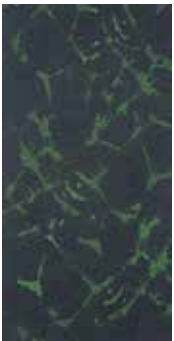
KNOWLEDGE 35006



GROWTH 84011



HUMOR 15009



HONESTY 35012

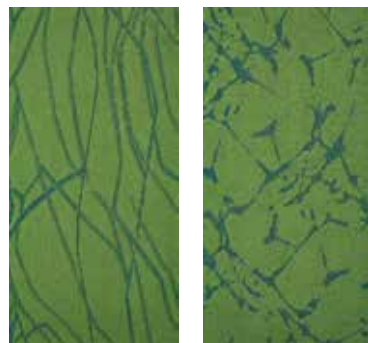
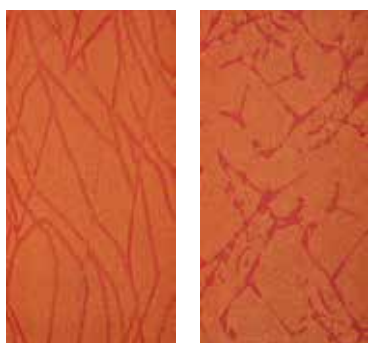




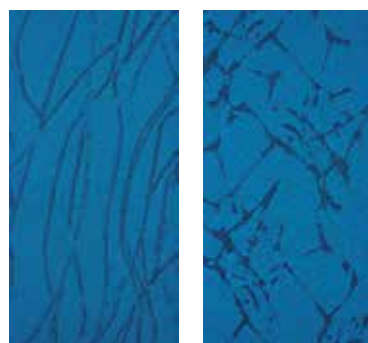
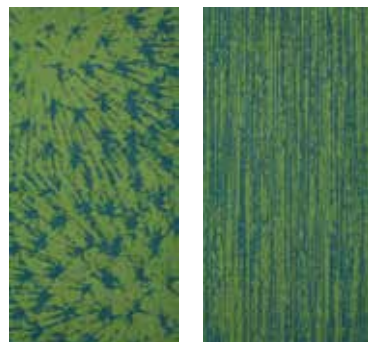
PLEASURE 74013



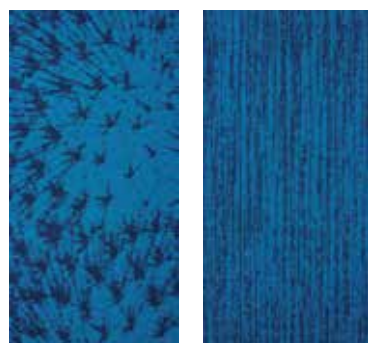
SECURITY 63014



JUSTICE 43016









ATTITUDE 34015







PERFORMANCE AND FEATURES









	AVAILABLE SIZE	Available in 18" x 36" modular tile.
	ANTRON® FIBER	Antron® Nylon 6,6 provides up to 40% better fade resistance, up to 65% better soil resistance, and 2.5x better texture retention. Carpets with Antron fiber can last up to 75% longer. Certified as an Environmentally Preferable Product.
	COLORSAFE®	Proprietary bleach resistant technology resists color fade-out from bleach spills and splashes. Limited 15-Year ColorSafe® Bleach Resistant Warranty.
	XGUARD®	XGUARD® stain resistant technology offers the highest level of performance in permanent stain resistance. Protection against common stains and ease of maintenance results in significant long-term appearance retention and a lower total cost of ownership. Limited 15-Year XGUARD® Stain Resistant Warranty.
	INFINITY® MODULAR	Modular backing engineered for strong performance, with excellent tuft bind and dimensional stability. Resists delamination, edge ravel, pilling, and fuzzing, and withstands aggressive wet cleanings. Available in standard 18" x 36" modular tiles. Infinity® Modular contains pre-consumer recycled content. Certified NSF/ANSI-140 Gold.
	WARRANTY	Limited Lifetime Wear & Backing Warranty.

SUSTAINABILITY






	ENVIRONMENTAL PRODUCT DECLARATION	EPDs communicate the comprehensive life cycle assessment of a product's environmental impact and facilitate transparency. Our EPDs conform to international standards and are 3rd party verified by SSC and NSF International.
	SOLAR ARRAY	At 3.3 acres, we have one of the largest solar arrays in the flooring industry generating 1,000,000 kilowatt hours annually.



## SUSTAINABILITY

	<p>ENERGY LEADERSHIP</p>	<p>With one of the largest solar arrays in the flooring industry (3.3 acres in Salem NJ) and ambitious goals to improve energy efficiency by 25% over ten years, we have an ongoing partnership with the Department of Energy to lead manufacturing into smarter energy use, as well as to reduce related carbon emissions.</p>
	<p>WATER REDUCTION</p>	<p>Water is a precious natural resource and a key component in manufacturing. By investing in technology and a continual emphasis on efficiency and lean manufacturing, we have reduced our water use by 30% since 2007. We also actively help protect wetlands in the communities where we make flooring.</p>
	<p>US MANUFACTURING</p>	<p>Mannington is a fourth generation, family-owned company deeply committed to U.S. manufacturing. We make flooring in seven communities across the U.S., allowing us to provide the highest levels of service and quality in the industry, while supporting local economies and crafting quality, American-made products.</p>
	<p>3RD PARTY CERTIFICATIONS</p>	<p>Certifications help navigate the world of green marketing claims. So we invest in ISO-14001 and environmentally preferable product certifications including NSF/ANSI-140, NSF/ANSI-332, FloorScore, and Green Label Plus. All of our products may contribute to multiple LEED and Green Globe credits.</p>
	<p>LOOP®</p>	<p>We have a responsible end-of-life plan for the products we manufacture. Through our LOOP® reclamation, we take back post-consumer carpet and closed-loop recycle it back into carpet. We also have closed-loop recycling processes in place for our LVT products and produce the only carpet-to-hard surface flooring – resilient sheet with 35% recycled content.</p>
	<p>RECYCLED CONTENT</p>	<p>We actively seeks out waste streams that clog America's landfills, looking for innovative ways to use them in new products. We also reclaim post-consumer carpet and tile from other flooring companies, as well as tires, telephone books, automotive glass, and other waste streams that contribute to landfills, incorporating them into carpet and surface flooring.</p>
	<p>SAMPLE RETURN</p>	<p>We offer a postage-paid return label for every commercial product sample that we ship. So when you are finished with your project, you can return the sample. We will send it on to the next user; and at the end of its useful life, we donate samples to local charities, churches, schools and civic groups.</p>
	<p>PURPLE MARTINS</p>	<p>In the mid-1980s, we began attracting migrating birds called Purple Martins to our New Jersey manufacturing campus as a more natural alternative to the use of pesticides. This "Purple Martin Project" has proven to be an incredibly environmentally friendly and cost effective way to control insects. Our employees are engaged in the banding and tracking of the birds.</p>



	HONEY BEES	In 2009, as part of an effort to show how an industrial enterprise can co-exist with the agricultural & farming community and positively contribute to both, Mannington's New Jersey corporate site began to house honeybees, and now have 5 hives in Salem, NJ and 4 in Eustis, FL. The honey bees are thriving and each year we are able to enjoy and share the honey we produce.
	ISO 14001	ISO 14001 is a global environmental standard that provides a system for continual improvement in environmental performance.
	CRI GREEN LABEL PLUS	GL+ is an independent carpet testing program that exceeds the CHPS indoor environmental quality standards for low-emitting products used in commercial settings. All Mannington Commercial carpet products pass CRI Green Label Plus certification for low VOC emissions.
	CE MARK	Certifies that a product has met EU health, safety, and environmental requirements, which ensure consumer safety. Manufacturers in the European Union (EU) and abroad must meet CE marking requirements where applicable in order to market their products in Europe.
	CLIMATE REGISTRY	Mannington is dedicated to reducing our greenhouse gas emissions by 25% over 10 years. Since 2007, a 10% reduction can be attributed to energy efficiencies, process efficiencies, and use of renewable energy. Additional information can be found on <a href="http://theclimateregistry.org">theclimateregistry.org</a> .



- Specifications are based on averages from normal manufacturing tolerances. Such variations do not affect product performance.
- Protective chair pads are recommended under office chairs with roller casters to preserve appearance and to avoid premature wear.
- As with all quality carpets, slight variation in color may occur from dye lot to dye lot.
- Backings or other materials may be changed without prior notice when shortages occur or when technological advancements provide improved product performance.
- This product is intended solely for use as an indoor floor covering and is not recommended or sold for any other purpose.
- The inherent characteristics of geometric linear patterns can result in double-dark or double-light lines at the seam and to some extent pattern run-off or bias. This is not a manufacturing defect, and as such, should be considered when selecting a modular carpet installation method.
- Cut piles, cut and loops, and tip-sheared constructions are not recommended for heavy commercial traffic, corridors, or through channeled traffic. Please contact your Mannington representative for information regarding these constructions and your specific end use application.