



---

Allegiant Collection

**Mannington**  
COMMERCIAL





**Cover: Terrain II Modular** - Grounds 45004 (Installation - Shuffled).  
**Above: Means III Modular** - Contour 13000 (Installation - Monolithic). Also available as broadloom.





**Centerfield IV Broadloom** – Contour T3000. Also available as modular tile.





**Terrain II Modular** - Term 15015 (Installation - Shuffled)



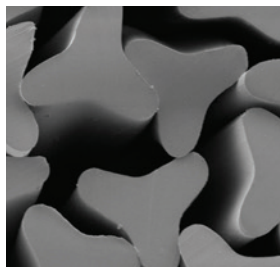
## Better Design, Easier To Maintain Carpet

Dirt and foot traffic are inevitable. Antron® type 6,6 nylon carpet fiber, designed with a four-hole hollow filament, delivers unbeatable overall performance, stain resistance, and texture retention. Antron® fiber also features DuraTech® soil resistance treatment to make cleaning easier and to protect your carpet for over one million foot traffics.

### Fiber Matters



Antron® type 6,6 nylon allows soil to be released more readily during vacuuming.



A type 6 nylon trilobal shape tends to hold soil in the fiber where vacuuming cannot release it.



### Fiber Shape

Antron®'s innovative hollow filament fiber shape enhances soil hiding capabilities. The smaller surface area minimizes soil accumulation and can make cleaning easier. Carpets with Antron® nylon can have 65% better soil resistance. <sup>(1)</sup>



### Appearance Retention

Carpets with Antron® nylon can have 2x better texture retention than carpets of the leading competitive nylon. Carpets of Antron® Lumena™ nylon can have up to 10x better stain resistance. <sup>(2)</sup>



### Quality Assurance

All carpets with Antron® nylon are subjected to a rigorous certification screening process and warranted by INVISTA for static resistance and against fiber loss due to abrasive wear.

**6,6**

### Type 6,6 Nylon Polymer

Type 6,6 nylon has a tighter, denser molecular structure than type 6 nylon. Carpet of Antron® nylon last up to 75% longer, and a longer product life can play a significant role in reducing environmental impact. <sup>(3)</sup>

1. Carpets of Antron® nylon can have 2x better texture retention than carpets of the leading competitive nylon.

2. Carpets of Antron® Lumena™ nylon can have up to 10x better stain resistance than carpets of the leading competitive solution dyed nylon.

3. Carpets of Antron® nylon last up to 75% longer than the majority of competitive nylon carpets. All test results and claims made are based upon a representative sample of carpets manufactured or sold in North America. Results for carpets manufactured and sold in your region may vary.

## Allegiant Collection

Style	Means III Broadloom	Means III Modular	Centerfield IV Broadloom
Construction	Patterned Loop	Patterned Loop	Tufted Textured Twist Loop
Face Fiber	Antron® Lumena™ Type 6,6 Nylon	Antron® Lumena™ Type 6,6 Nylon	Antron® Lumena™ Type 6,6 Nylon
Dye Method	Solution	Solution	Solution
Gauge	1/12 (47.24 per 10 cm)	1/12 (47.24 per 10 cm)	1/10 (39.37 per 10 cm)
Stitches Per Inch	9.6 (37.80 per 10 cm)	9.6 (37.80 per 10 cm)	6.33 (24.92 per 10 cm)
Density	7,200 (267.54 Kg/m³)	7,200 (267.54 Kg/m³)	7,058 (262.26 Kg/m³)
Pile Thickness	0.100" (2.54 mm)	0.100" (2.54 mm)	0.102" (2.59 mm)
Weight	20 oz/sq yd (678 g/m²)	20 oz/sq yd (678 g/m²)	20 oz/sq yd (678 g/m²)
Backing Type	UltraBac® RE, Integra HP®	Infinity® Modular	UltraBac® RE, Integra HP®
Sizes	12' (3.66 m)	24" x 24" (60.96 cm x 60.96 cm)	12' (3.66 m)
Colors	16	16	16
Pattern Repeat	24" W x 39" L (60.96 x 99.06 cm)	N/A	N/A
Packaging	N/A	6.22 Sq. Yards / 14 Tiles	N/A
Adhesive	Mannington Ultra Adhesive, Mannington Integra-2 Adhesive	Infinity Adhesive	Mannington Ultra Adhesive, Mannington Integra-2 Adhesive
Installation Method	N/A	Monolithic	N/A
<b>Testing</b>			
Dimensional Stability AACHEN Test	Passes	Passes	Passes
Electrostatic Propensity (AATCC 134)	Less than 3.0 KV	Less than 3.0 KV	Less than 3.0 KV
Radiant Panel (ASTM E648)	≥ 0.45 watts/cm2, Passes (Class 1)	≥ 0.45 watts/cm2, Passes (Class 1)	≥ 0.45 watts/cm2, Passes (Class 1)
Smoke Density (ASTM E662)	≤ 450-Passes	≤ 450-Passes	≤ 450-Passes
Methenamine Pill Test (ASTM D-2859)	Passes	Passes	Passes
Hexapod (ASTM D5252) TARR Rating (Add)	3.5	3.5	3.5
<b>Environmental Data</b>			
NSF / ANSI-140 Certification	UltraBac® RE - Platinum Integra HP® - Gold	Infinity® Modular - Gold	UltraBac® RE - Platinum Integra HP® - Gold
Recycled Content	Contains both Post and Pre Consumer		
Indoor Air Quality	CRI Green Label Plus Certified		
Recyclability	LOOP®		
LEED Scoreboard	May contribute to LEED Credits LEED 2009: MRC5 Regional Material; IEQ4.1 Low Emitting Adhesives; IEQ4.3 Low Emitting Materials - Flooring LEEDv4: Building Product Disclosure & Optimization - EPDs; Building Product Disclosure & Optimization - Sourcing Raw Materials; IEQc2 - Low Emitting Materials		
mindful Materials	Visit mM Origin website, mindfulmaterials.origin.build, for current transparency information		
Manufacturing	Calhoun, Georgia (USA) - ISO 14001 Registered		
<b>Warranty</b>			
	Limited Lifetime Wear & Backing Limited 15-Year XGUARD® Stain Resistant Limited 15-Year ColorSafe® Bleach Resistant		

- Specifications are based on averages from normal manufacturing tolerances. Such variations do not affect product performance.
- Protective chair pads are recommended under office chairs with roller castors to preserve appearance and avoid premature wear.
- As with all quality carpets, slight variation in color may occur from dye lot to dye lot.
- Backing or other materials may be changed without prior notice when shortages occur or when technological advancements provide improved product performance.
- This product is intended solely for use as an indoor floor covering and is not recommended or sold for any other purpose.
- The inherent characteristics of geometric linear patterns can result in double-dark or double-light lines at the seam and to some extent pattern run-off or bias. This is not a manufacturing defect, and as such, should be considered when selecting a modular carpet installation method.
- Please make final selection from actual swatch. To order samples go to [manningtoncommercial.com](http://manningtoncommercial.com) or call 800.241.2262 ext. 6913.



## Allegiant Collection

Style	Centerfield IV Modular	Terrain II Modular
Construction	Tufted Textured Twist Loop	Patterned Loop
Face Fiber	Antron® Lumena™ Type 6,6 Nylon	Antron® Lumena™ Type 6,6 Nylon
Dye Method	Solution	Solution
Gauge	1/10 (39.37 per 10 cm)	1/12 (47.24 per 10 cm)
Stitches Per Inch	6.33 (24.92 per 10 cm)	9.16 (36.06 per 10 cm)
Density	7,058 (262.26 Kg/m³)	5,102 (189.58 Kg/m³)
Pile Thickness	0.102" (2.59 mm)	0.127" (3.23 mm)
Weight	20 oz/sq yd (678 g/m²) Also available in 26 oz for a 500 sq/yd minimum)	18 oz/sq yd (610 g/m²)
Backing Type	Infinity® Modular	Infinity® Modular
Sizes	24" x 24" (60.96 cm x 60.96 cm)	24" x 24" (60.96 cm x 60.96 cm)
Colors	16	16
Packaging	6.22 Sq. Yards / 14 Tiles	6.22 Sq. Yards / 14 Tiles
Adhesive	Infinity Adhesive	Infinity Adhesive
Installation Method	Monolithic	Shuffled
<b>Testing</b>		
Dimensional Stability AACHEN Test	Passes	Passes
Electrostatic Propensity (AATCC 134)	Less than 3.0 KV	Less than 3.0 KV
Radiant Panel (ASTM E648)	≥ 0.45 watts/cm2, Passes (Class 1)	≥ 0.45 watts/cm2, Passes (Class 1)
Smoke Density (ASTM E662)	≤ 450-Passes	≤ 450-Passes
Methenamine Pill Test (ASTM D-2859)	Passes	Passes
Hexapod (ASTM D5252) TARR Rating (Add)	3.5	3.5
<b>Environmental Data</b>		
NSF / ANSI-140 Certification	Infinity® Modular - Gold	Infinity® Modular - Gold
Recycled Content	Contains both Post and Pre Consumer	
Indoor Air Quality	CRI Green Label Plus Certified	
Recyclability	LOOP®	
LEED Scoreboard	May contribute to LEED Credits LEED 2009: MRc5 Regional Material; IEQ4.1 Low Emitting Adhesives; IEQ4.3 Low Emitting Materials - Flooring LEEDv4: Building Product Disclosure & Optimization - EPDs; Building Product Disclosure & Optimization - Sourcing Raw Materials; IEQc2 - Low Emitting Materials	
mindful Materials	Visit mM Origin website, <a href="http://mindfulmaterials.origin.build">mindfulmaterials.origin.build</a> , for current transparency information	
Manufacturing	Calhoun, Georgia (USA) - ISO 14001 Registered	
<b>Warranty</b>		
	Limited Lifetime Wear & Backing, Limited 15-Year XGUARD® Stain Resistant, Limited 15-Year ColorSafe® Bleach Resistant,	

- Specifications are based on averages from normal manufacturing tolerances. Such variations do not affect product performance.
- Protective chair pads are recommended under office chairs with roller castors to preserve appearance and avoid premature wear.
- As with all quality carpets, slight variation in color may occur from dye lot to dye lot.
- Backing or other materials may be changed without prior notice when shortages occur or when technological advancements provide improved product performance.
- This product is intended solely for use as an indoor floor covering and is not recommended or sold for any other purpose.
- The inherent characteristics of geometric linear patterns can result in double-dark or double-light lines at the seam and to some extent pattern run-off or bias. This is not a manufacturing defect, and as such, should be considered when selecting a modular carpet installation method.
- Please make final selection from actual swatch. To order samples go to [manningtoncommercial.com](http://manningtoncommercial.com) or call 800.241.2262 ext. 6913.