



Heirloom Collection

**Mannington**  
COMMERCIAL





**Cover:** Relic Modular - Union 34636 & Trust 32640; Memento Modular - Union 34636  
**Relic Modular** - Circular 52637; **Memento Modular** - Wreath 43641  
**Installation** - 3-Step Vertical Ashlar





**Relic Modular** - Threshold 73639; **Memento Modular** - Threshold 73639;  
**Souvenir** - Bohemia 24647; **Antico Wood** - Pilgrim Oak AROW8130  
**Installation** - 3-Step Vertical Ashlar (Relic/Memento); Horizontal Brick Ashlar (Souvenir)



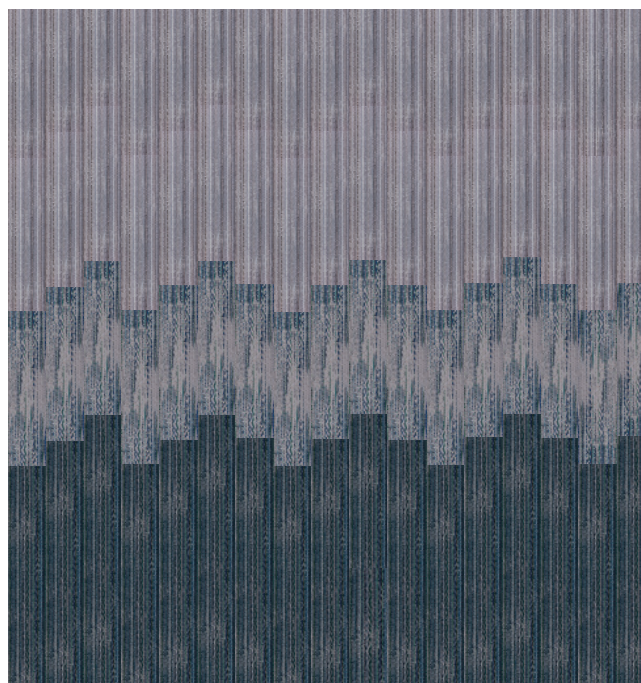


**Relic Modular** - Invitation 15646; **Memento Modular** - Invitation 15646;  
**Souvenir Modular** - Bohemia 24647;  
**Installation** - 3-Step Vertical Ashlar (Relic/Memento); Horizontal Brick Ashlar (Souvenir)

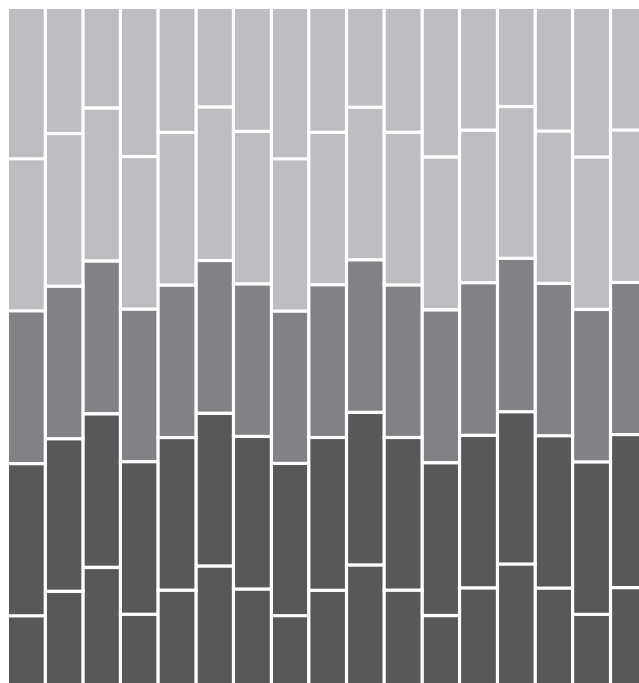


## Sample Installations

The Heirloom Collection is crafted for layout versatility. You can easily mix the styles to build areas of faded patterning, small-scale texture and vivid design. Combine the plank and tile formats in a variety of patterns to enhance the functionality and aesthetic richness of your space. We present just a few ideas here to show Heirloom's array of layout possibilities.

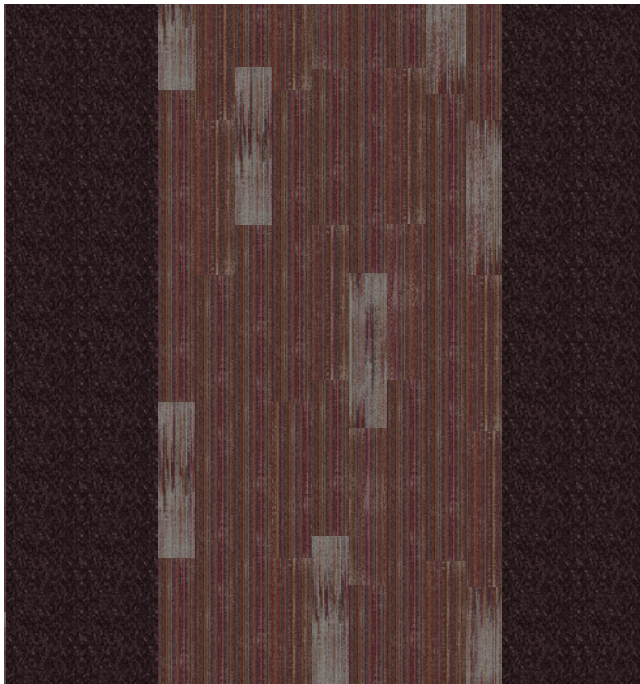


**Relic** Trust (*middle*); **Memento** Union & Trust (*top/bottom*)

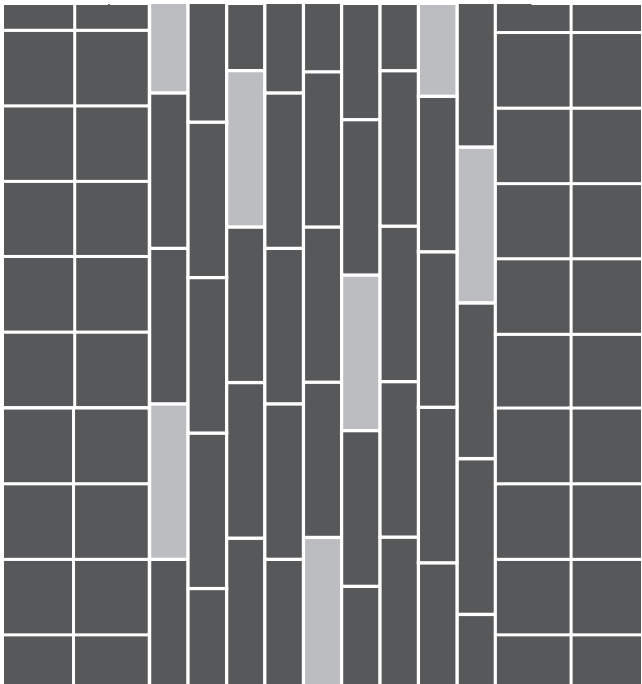


Random installation with color and pattern fade.

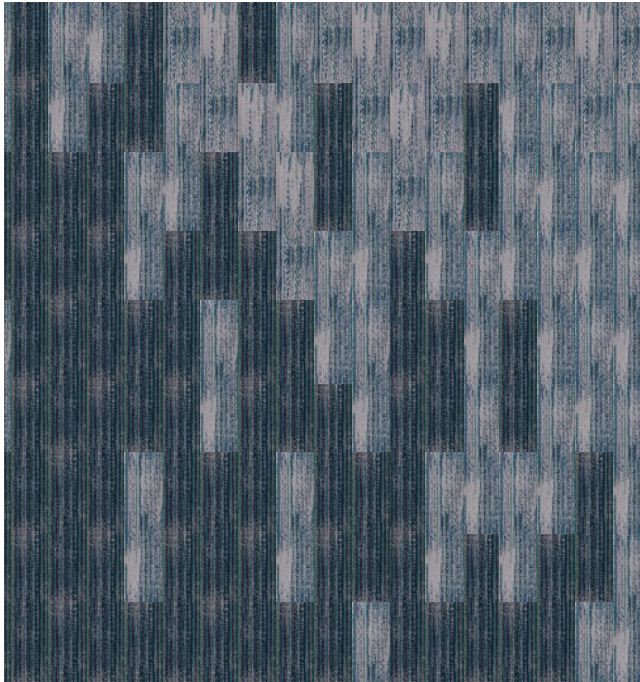




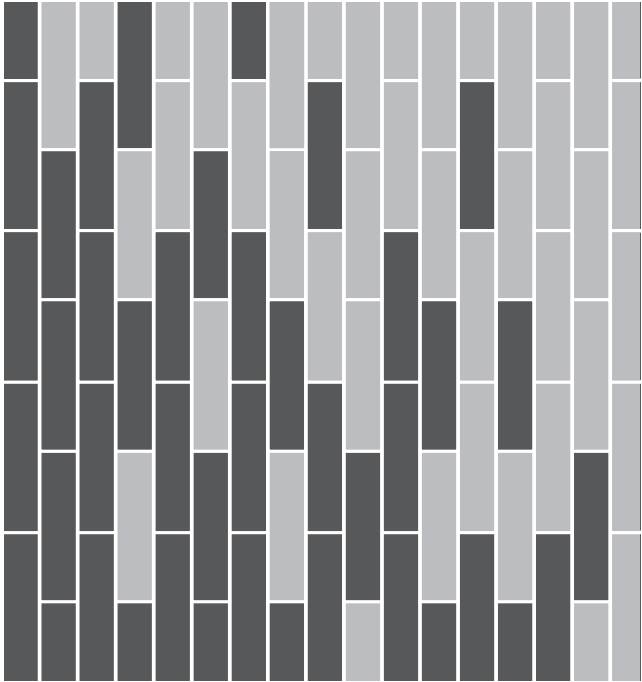
**Memento & Relic** Threshold (*interior*);  
**Souvenir** Bohemia (*exterior edges*)



Random installation with light tile highlights.



**Memento & Relic** Union

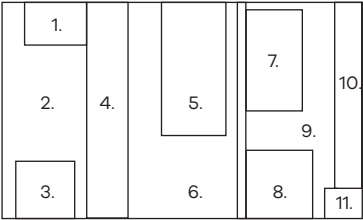


Random installation with a dark to light tile fade on a curve.



# Heirloom Coordinates

Our collections integrate seamlessly across product types, so you can use the right type of flooring in every space without sacrificing the cohesiveness of your design. Choose LVT in wood and stone visuals for a natural complement to the rich authenticity of the Heirloom Collection. Reinforce or extend your palette by bringing in the perfectly matching solid tones of Color Anchor modular carpet.



- |   |                                  |
|---|----------------------------------|
| 1. Color Anchor, Rhubarb                  | 6. Heirloom, Relic, Threshold    |
| 2. Heirloom, Relic and Memento, Threshold | 7. Amtico, Kura Anise            |
| 3. Spacia Wood, Drift Pine                | 8. Heirloom, Souvenir, Bohemia   |
| 4. Color Anchor, Poppy                    | 9. Heirloom, Relic, Threshold    |
| 5. Spacia Wood, Merchant Wood             | 10. Color Anchor, Barley         |
|   | 11. Heirloom, Memento, Threshold |



## Heirloom Inspiration

The Heirloom Collection celebrates the sense of community created by traditional handiwork, and the ability of craft to build new meanings over time. The collection features patterns that recall brightly colored embroidery as well as areas of fading that create a sense of time and highlight the carpet's texture. In modular tile and plank to mix and match, the patterns build a story of rich, intricate beauty.



Crafted with purpose





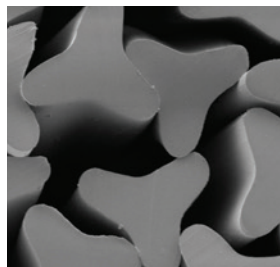
## Better Design, Easier To Maintain Carpet

Dirt and foot traffic are inevitable. Antron® type 6,6 nylon carpet fiber, designed with a four-hole hollow filament, delivers unbeatable overall performance, stain resistance, and texture retention. Antron® fiber also features DuraTech® soil resistance treatment to make cleaning easier and to protect your carpet for over one million foot traffics.

### Fiber Matters



Antron® type 6,6 nylon allows soil to be released more readily during vacuuming.



A type 6 nylon trilobal shape tends to hold soil in the fiber where vacuuming cannot release it.



### Fiber Shape

Antron®'s innovative hollow filament fiber shape enhances soil hiding capabilities. The smaller surface area minimizes soil accumulation and can make cleaning easier. Carpets with Antron® nylon can have 65% better soil resistance. <sup>(1)</sup>



### Appearance Retention

Carpets with Antron® nylon can have 2x better texture retention than carpets of the leading competitive nylon. Carpets of Antron® Lumena™ nylon can have up to 10x better stain resistance. <sup>(2)</sup>



### Quality Assurance

All carpets with Antron® nylon are subjected to a rigorous certification screening process and warranted by INVISTA for static resistance and against fiber loss due to abrasive wear.

**6,6**

### Type 6,6 Nylon Polymer

Type 6,6 nylon has a tighter, denser molecular structure than type 6 nylon. Carpet of Antron® nylon last up to 75% longer, and a longer product life can play a significant role in reducing environmental impact. <sup>(3)</sup>

1. Carpets of Antron® nylon can have 2x better texture retention than carpets of the leading competitive nylon.

2. Carpets of Antron® Lumena™ nylon can have up to 10x better stain resistance than carpets of the leading competitive solution dyed nylon.

3. Carpets of Antron® nylon last up to 75% longer than the majority of competitive nylon carpets. All test results and claims made are based upon a representative sample of carpets manufactured or sold in North America. Results for carpets manufactured and sold in your region may vary.



Heirloom Collection

Style	Memento Modular (Non-Ortho Phthalate)	Relic Modular (Non-Ortho Phthalate)	Souvenir Modular (Non-Ortho Phthalate)
Construction	Textured Pattern Loop	Textured Pattern Loop	Tip-Sheared Pattern Loop
Face Fiber	Antron Lumena® Type 6,6™ Nylon	Antron Lumena® Type 6,6™ Nylon	Antron Lumena® Type 6,6™ Nylon
Dye Method	Solution	Solution	Solution
Gauge	5/64 (50.39 per 10 cm)	5/64 (50.39 per 10 cm)	5/64 (50.39 per 10 cm)
Stitches Per Inch	10 (39.37 per 10 cm)	10 (39.37 per 10 cm)	10.83 (42.64 per 10 cm)
Density	6,315 (234.65 Kg/m3)	6,315 (234.65 Kg/m3)	6,187 (229.90 Kg/m3)
Pile Thickness	0.114" (2.89 mm)	0.114" (2.89 mm)	0.128" (3.25 mm)
Weight	20 oz/sq yd (678 g/m2)	20 oz/sq yd (678 g/m2)	20 oz/sq yd (678 g/m2) - Finished
Backing Type	Infinity® Modular	Infinity® Modular	Infinity® Modular
Sizes	12" x 48" (30.48 x 121.92 cm)	12" x 48" (30.48 x 121.92 cm)	24" x 24" (60.96 x 60.96 cm)
Colors	8 Colors	8 Colors	12 Colors
Packaging	6.22 Sq. Yards / 14 Tiles	6.22 Sq. Yards / 14 Tiles	6.22 Sq. Yards / 14 Tiles
Adhesive	Infinity® Adhesive	Infinity® Adhesive	Infinity® Adhesive
Installation Method	3-Step Vertical Ashlar	3-Step Vertical Ashlar	Horizontal Brick Ashlar
Testing			
Dimensional Stability AACHEN Test	Passes	Passes	Passes
Electrostatic Propensity (AATCC 134)	Less than 3.0 KV	Less than 3.0 KV	Less than 3.0 KV
Radiant Panel (ASTM E648)	≥ 0.45 watts/cm², Passes (Class 1)	≥ 0.45 watts/cm², Passes (Class 1)	≥ 0.45 watts/cm², Passes (Class 1)
Smoke Density (ASTM E662)	≤ 450-Passes	≤ 450-Passes	≤ 450-Passes
Methenamine Pill Test (ASTM D-2859)	Passes	Passes	Passes
Hexapod (ASTM D5252) TARR Rating	3.5	3.5	3.5
Environmental Data			
NSF / ANSI-140 Certification	Infinity® Modular - Gold	Infinity® Modular - Gold	Infinity® Modular - Gold
Recycled Content	Contains Pre Consumer Recycled Content		
Indoor Air Quality	CRI Green Label Plus Certified		
Recyclability	LOOP®		
LEED Scoreboard	May contribute to LEED Credits. LEED 2009: MRc5 Regional Materials, MRc6 Rapidly Renewable Materials, IEQ4.1 Low Emitting Adhesives, IEQ4.3 Low Emitting Materials-Flooring LEEDv4: Building product disclosures & optimization - EPDs, Building Product disclosure & optimization - sourcing raw materials, IEQc2 - Low Emitting Materials		
mindful Materials	Visit mM Origin website for current transparency information.		
Manufacturing	Calhoun, Georgia (USA) - ISO 14001 Certified		
Warranty			
	Limited Lifetime Wear & Backing Limited 15-Year XGUARD® Stain Resistant Limited 15-Year ColorSafe® Bleach Resistant		

- Specifications are based on averages from normal manufacturing tolerances. Such variations do not affect product performance.
- Protective chair pads are recommended under office chairs with roller castors to preserve appearance and avoid premature wear.
- As with all quality carpets, slight variation in color may occur from dye lot to dye lot.
- Backing or other materials may be changed without prior notice when shortages occur or when technological advancements provide improved product performance.
- This product is intended solely for use as an indoor floor covering and is not recommended or sold for any other purpose.
- The inherent characteristics of geometric linear patterns can result in double-dark or double-light lines at the seam and to some extent pattern run-off or bias. This is not a manufacturing defect, and as such, should be considered when selecting a modular carpet installation method.
- Cut piles, cut and loops, and tip-sheared constructions are not recommended for heavy commercial traffic, corridors or through channeled traffic. Please contact your Mannington representative for information regarding these constructions and your specific end use application.
- Please make final selection from actual swatch. To order samples go to [manningtoncommercial.com](http://manningtoncommercial.com) or call 800.241.2262 ext. 6913.