



---

Insight Plus / Insight Plus GB Collection

**Mannington**  
COMMERCIAL





Cover: **Crossbar** - Iron 6607

Above: **Limestone Walk** - Soapstone 6624, 6624GB





















Hickory - Kahlua 6699

















QUANTUM GUARD®  
*pro*

Quantum Guard Pro provides exceptional results in the key performance areas of cleanability, stain protection and wear resistance, keeping your sheet flooring looking better, longer.

### Easy to Clean

Combined with the sheet's subtle texture, Quantum Guard Pro is engineered for ease of cleaning. No polish needed.

### Advanced Resistance to Stains

New urethane chemistry gives better protection from stains – even from difficult staining agents.

### Advanced Resistance to Abrasion

New configuration of tough aluminum oxide particles provides continuous resistance to abrasion.

---

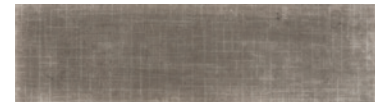
One of the highest-performing, enhanced urethanes in the industry.

---

### The Quantum Guard Pro Advantage

Quantum Guard Pro is specifically engineered to protect your flooring investment while saving you time and money on maintenance costs. The result? An easy-care floor with long-lasting beauty that will enhance your space for years to come.

#### Cleanability



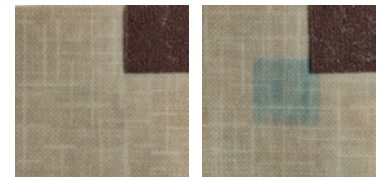
Quantum Guard Pro Soiled



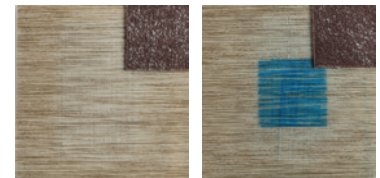
Quantum Guard Pro After Cleaning

Results after 10 passes with a wet microfiber mop on soiled floor.

#### Stain and Abrasion Resistance



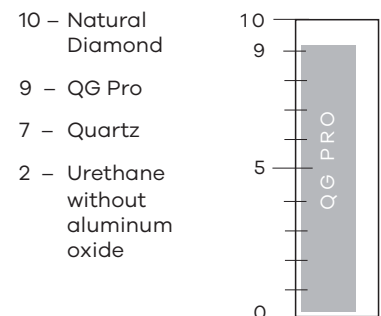
Quantum Guard Pro



Leading Competitor

Results after 1,000 passes with a sanding block, staining with a blue Sharpie and cleaning with an alcohol wipe.

#### Mohs Hardness Scale





## Insight Plus Collection

Style	Acacia, Alloy, Arizona Slate, Chesapeake, Crossbar, Granulaire, Hickory, Limestone Walk, Maple Grove, Wild Oak
Construction	Light Heterogeneous Sheet (Non-ortho phthalate construction)
Classification	ASTM F1303 Type 1, Grade 1, Class A
Total Thickness	0.080" (2.03 mm)
Wear Layer Thickness	0.020" (0.51 mm)
Wear Layer	Quantum Guard® Pro
Width	12' (3.66 m)
Colors	3 - Acacia, 3 - Alloy, 2 - Arizona Slate, 3 - Chesapeake, 3 - Crossbar, 2 - Granulaire, 2 - Hickory, 3 - Limestone Walk, 4 - Maple Grove, 3 - Wild Oak
Pattern Repeat	36" L x 36" W - Alloy, Arizona Slate, Chesapeake, Granulaire, Limestone Walk 48" L x 72" W - Acacia 36" L x 72" W - Crossbar 36" L x 48" W - Hickory 48" L x 48" W - Maple Grove 48" L x 36" W - Wild Oak
Packaging	35-170 yd <sup>2</sup> (29.3-142.5 m <sup>2</sup> )
Weight	3.3 lbs/yd <sup>2</sup> (1.77 kg/m <sup>2</sup> )
Adhesive	Porous & Non-porous Substrates: V-81 Full Spread, Premium Latex
Seam Method	Mannington MLG-33 Chemical Seam Sealer. Mannington Seam Coater Pen for high traffic areas.
Testing	
HUD/FHA	Meets / Exceeds
ADAG (American Disability Act Guidelines)	Passes
Flexibility (ASTM F790)	Passes - 1/4" Mandrel - No Crack/Break
Static Load (ASTM F970)	Passes - Residual Indent ≤ 0.005"
Static Load (ASTM F970 mod.)	Passes - 500 PSI; Residual Indent ≤ 0.005"
Rolling Resistance/Caster Chair (ISO 4918)	25,000 Cycles, No Significant Change
Short Term Residual Indentation (ASTM F1914/F1303)	Passes - Must Be ≤ 0.012"
Flooring Radiant Panel (ASTM E648)	Passes - Class 1; ≥ 0.45 watts/cm <sup>2</sup>
Smoke Density (ASTM E662)	Passes - ≤ 450
Slip Resistance (ASTM C1028, Dry)	Passes - ≥ 0.5 Leather; 0.6 Rubber
Acoustic IIC (ASTM E492)	50 - 6" Concrete with Drop Ceiling
Acoustic STC (ASTM E90)	63 - 6" Concrete with Drop Ceiling
Resistance to Light (ASTM F1515)	Passes - < 8 Delta E Color Change
Chemical Resistance (ASTM F925)	Passes - No More Than Slight Change
Resistance to Heat (ASTM F1514)	Passes - < 8 Delta E Color Change
Resistance to Mold/Mildew (ASTM G21/E2180)	Passes - No More Than Slight Change
Environmental Data	
Indoor Air Quality	FloorScore Certified; CDPH v1.1-2010
Product Declarations	EPD
LEED Scoreboard	May contribute to LEED credits: LEED 2009: MRc5 Regional Materials; IEQ4.1 Low Emitting Adhesives; IEQ4.3 Low Emitting Materials - Flooring LEED v4: Building Product Disclosure & Optimization - EPDs; IEQc2 - Low Emitting Materials
mindful MATERIALS	Visit mM Origin website, mindfulmaterials.origin.build, for current transparency information
Manufacturing	Salem, NJ (USA) - ISO 14001 EMS Registered
Warranty	
	Limited 10 Year Light Commercial Warranty Limited 15 Year Residential Warranty

**Note:** Visual/Color variations can occur from roll to roll. This variation does not affect product performance.



## Insight Plus GB Collection

Style	Acacia, Alloy, Arizona Slate, Crossbar, Limestone Walk, Maple Grove, Wild Oak
Construction	Light Heterogeneous Sheet (Non-ortho phthalate construction)
Classification	ASTM F1303 Type 1, Grade 2, Class C
Total Thickness	0.080" (2.03 mm)
Wear Layer Thickness	0.014" (0.36 mm)
Wear Layer	Quantum Guard® Pro
Width	6' (1.83 m), 12' (3.66 m)
Colors	2 each style
Pattern Repeat	36" L x 36" W - Alloy, Arizona Slate, Limestone Walk 48" L x 72" W - Acacia 36" L x 72" W - Crossbar 48" L x 48" W - Maple Grove 48" L x 36" W - Wild Oak
Packaging	6' - 35-70 yd <sup>2</sup> (29.3-58.5 m <sup>2</sup> ) 12' - 35-170 yd <sup>2</sup> (29.3-142.5 m <sup>2</sup> )
Weight	3.3 lbs/yd <sup>2</sup> (1.77 kg/m <sup>2</sup> )
Adhesive	<b>Porous &amp; Non-porous Substrates:</b> <b>MT-711</b> Acrylic Based Pressure Sensitive <b>V-88</b> Full Spread, Transitional Pressure Sensitive, High Moisture <b>XpressStep</b> for LVT & Sheet Vinyl Full Coverage Spray
QuickStix®	Available with QuickStix® pre-applied adhesive, reducing time and labor required to install the flooring. QuickStix® floors can be used immediately after installation, even in extreme moisture areas.
Seam Method	Mannington MLG-33 Chemical Seam Sealer. Mannington Seam Coater Pen for high traffic areas.
Testing	
HUD/FHA	Meets / Exceeds
ADAG (American Disability Act Guidelines)	Passes
Flexibility (ASTM F790)	Passes - 1/4" Mandrel - No Crack/Break
Static Load (ASTM F970)	Passes - Residual Indent ≤ 0.005"
Static Load (ASTM F970 mod.)	Passes - 1,000 PSI; Residual Indent ≤ 0.005"
Rolling Resistance/Caster Chair (ISO 4918)	25,000 Cycles, No Significant Change
Short Term Residual Indentation (ASTM F1914/F1303)	Passes - Must Be ≤ 0.012"
Flooring Radiant Panel (ASTM E648)	Passes - Class 1; ≥ 0.45 watts/cm <sup>2</sup>
Smoke Density (ASTM E662)	Passes - ≤ 450
Slip Resistance (ASTM C1028, Dry)	Passes - ≥ 0.5 Leather; 0.6 Rubber
Acoustic IIC (ASTM E492)	50 - 6" Concrete with Drop Ceiling
Acoustic STC (ASTM E90)	63 - 6" Concrete with Drop Ceiling
Resistance to Light (ASTM F1515)	Passes - < 8 Delta E Color Change
Chemical Resistance (ASTM F925)	Passes - No More Than Slight Change
Resistance to Heat (ASTM F1514)	Passes - < 8 Delta E Color Change
Resistance to Mold/Mildew (ASTM G21/E2180)	Passes - No More Than Slight Change
Environmental Data	
Indoor Air Quality	FloorScore Certified; CDPH v1.1-2010
Product Declarations	EPD
LEED Scoreboard	May contribute to LEED credits: LEED 2009: MRc5 Regional Materials; IEQ4.1 Low Emitting Adhesives; IEQ4.3 Low Emitting Materials - Flooring LEED v4: Building Product Disclosure & Optimization - EPDs; IEQc2 - Low Emitting Materials
mindful MATERIALS	Visit mM Origin website, <a href="http://mindfulmaterials.origin.build">mindfulmaterials.origin.build</a> , for current transparency information
Manufacturing	Salem, NJ (USA) - ISO 14001 EMS Registered
Warranty	
	Limited 10 Year Light Commercial Warranty

**Note:** Visual/Color variations can occur from roll to roll. This variation does not affect product performance.